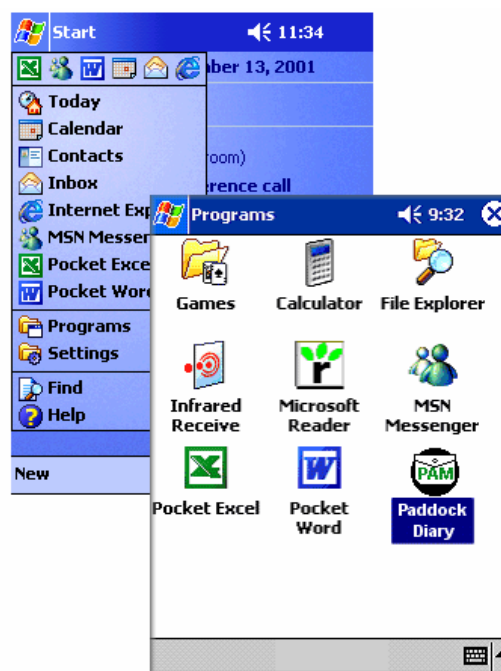


PocketPAM Manual

Palm OS



PocketPC



by
Fairport Technologies
Data Collection Software for the
PAM Series of Software



PocketPAM means..

1. A set of programs which run on a handheld computer... Either a 3Com Palm M100, M105, M505, III, V, VII or an equivalent platform... Handspring Visor, IBM workpad (and there are others) or the Windows CE Pocket PC hardware. (Compaq Ipaq, HP Jornada and others)... In this manual we refer to the hardware as a “Handheld Computer” or just a “Handheld”.

2. A PC program called P2P.exe (PocketPAM Utilities) which does the following:
 - For Palm users : Installs the PocketPAM Palm software (and any subsequent upgrades) onto the handheld computer
 - For Palm users : Registers each of the PocketPAM programs into the Hot Sync Manager’s “Programs to be Hot Sync-ed List ” for each Handheld User
 - For Palm users : Performs the registration & unlocking process for each Palm user at a site... (there’s no limit to the number of PocketPAM users at a site – Each one must be a registered PocketPAM User)
 - For Pocket PC users : Performs the registration & unlocking process for each Palm user at a site...
 - Transfers PAM data to PocketPAM (eg. The Crop Diary can store a whole season of Paddock Activities Dairy data for a number of farms and clients (if MultiClient)).
 - Transfers the updated data from PocketPAM to PAM... updates PAM files, inserts costs and other relevant information that PocketPAM doesn’t get involved in.

PocketPAM - “Now, This should stop you sitting at that computer”

PocketPAM - Not just a data collector... a whole new way of life.

Contents

<u>Installation</u>	5
Palm OS	5
Installing all PocketPAM programs?	5
Installing only some of the PocketPAM programs?	6
Pocket PC	6
<u>Getting started</u>	7
You need to have a handheld computer!	7
Registering your User Name	9
<u>Transferring PAM data to your handheld</u>	10
Palm OS:	10
PocketPC:	11
<u>Palm OS Tip: Organising PocketPAM programs on your handheld</u>	12
Bare Essentials	13
All Data	13
Limitations	14
Buttons on Data Entry Forms	15
Adding, Deleting and Navigating in Data Entry Screens	15
Crop Diary Tips	16
Reviewing lists of items	18
<u>How to...</u>	19
Enter a planting record	19
Enter some Job Notes	20
Enter a Chemical Applications	20
Enter Fertiliser Records	22
<u>Entering Plans</u>	22
Converting Plans to Actuals	22
<u>Rainfall</u>	23
Entering Data	23
<u>GP Diary</u>	24
<u>GPS Scout</u>	25

Crop Monitoring.....	25
Pasture Monitoring	27
<u>PocketPAM Livestock</u>	29
Important preamble:	29
What PAM data is transferred to PocketPAM?	29
Using the software.....	30
Moves	30
Treatments (and Supplementary Feeds):	31
Alter Attributes:.....	32
Alter Numbers:	33
Sales:.....	33
The Create New Stock Class (Mob Code) Screen:	34
Purchases:	34
Births:	35
Splits and Joins:	35
View Lists System	36
<u>PocketPAM Inventory</u>	37
Important Hot Sync Information	37
The Buttons	38
Purchases	38
Adjustments.....	38
Movements.....	39
Delete	39
Edit	39

Installation

Palm OS

- 1) Install PocketPAM from the Fairport CD by selecting “PocketPAM” on the CD Browser screen...or, if you have downloaded the program from the Fairport website, run the program you have downloaded (pocketpam.exe). The installer will install all files you will need to run the PC based PocketPAM Utilities program and the programs you will need to install on your handheld.
- 2) After running the installer from a CD (or from your download), you will find the P2P program Icon on your Windows “Desktop”
- 3) Run the PocketPAM Utilities program to install the handheld software.

Installing all PocketPAM programs?

This process will do the following...

Each of the PocketPAM programs will be registered into the Hot Sync Manager’s list of programs to synchronise, and each of the programs will be installed on your handheld.

Be ready to read and respond to the messages on the screen. You will need to press the Hot Sync button to initialise the installation.

- 1) Select the “Installation #1” Tab
- 2) Click on the “Install All PocketPAM software” button... follow the prompts. You will need to be ready to start your Hot Sync process from your handheld. When that’s done,
- 3) Click on the “Register All Software in Hot Sync” button. When that is completed we recommend you close down PocketPAM Utilities then re-boot your computer to ensure your Hot Sync Manager program is operating.

Installing only some of the PocketPAM programs?

- 1) Select the “Installation #2” Tab
- 2) Click on the program to install.
- 3) Now click the button “Install PocketPAM software” button... follow the prompts. You will need to be ready to start your Hot Sync process from your handheld. When that’s done, click on the “Register in Hot Sync” button. When that is completed we recommend you re-boot your computer.

Installation

Pocket PC

- 1 Install PocketPAM from the Fairport CD by placing the handheld device into the cradle and selecting “PocketPAM” on the CD Browser screen...or, if you have downloaded the program from the Fairport website, run the program you have downloaded (PP_CE.exe). The installer will install all files you will need to run the PC based PocketPAM Utilities.
- 2 The software installation onto the handheld device is automatic, please follow the prompts and select the default installation path when asked.

You are now able to run the Desktop PocketPAM Utilities program.

Please see “Transferring PAM data for your handheld” on page 9 of this manual.

Getting started

You need to have a handheld computer!

You need to have the Palm Desktop Utilities and/or at least the Sync system loaded on your computer. This software is supplied with the handheld computers and it is automatically run each time you press your Hot Sync button (Palm OS) or dock (Pocket PC) on your handheld computer's Sync cradle.

TIP: If you are new to the handheld computer you should begin by installing the software supplied with your handheld. On installation you will be prompted to use the Hot Sync cradle and to enter your "User Name" (Palm OS).

Please take some time to familiarise yourself with the basic workings of your handheld device and its supporting software.

Palm OS: Your handheld user name will need to be known to the Hot Sync manager. This will be automatic if you have already used your handheld computer with the Hot Sync system.

The PocketPAM Utilities program will operate without the Sync software loaded on your computer but none of its software installation or data transfer functions will work.

Pocket PC: On installation of your Active Sync software your computer will be registered in the handheld utilities software and you will be able to Sync between your handheld and your PC either automatically or manually depending on the settings you have chosen in the Active Sync manager.

Can you install the PocketPAM software on your handheld without obtaining your license unlock number from Fairport Technologies?

Palm OS: Yes, you can install and run the Palm – PocketPAM software, but without obtaining an unlocking code for your User Name, you will not be able to synchronise your data to and from your PAM program. This means that the Crop Diary, the Rainfall program and the gpsScout program will not have your PAM lists in them. For example, your farm names, rainfall station names, cropped areas, and consumables etc. will not be transferred unless you are a registered user.

Pocket PC: Using PocketPAM for Pocket PC you will be able to sync your data up to 20 times without registering.

Registering your User Name

Palm OS: Each user who is to synchronise PocketPAM data on your PC will need to obtain a separate unlocking code from Fairport.

On the “Installation #1” Tab you will see the “Register Users” button. Click on this to see the unlocking form.

Use the Print Registration Form button to generate the form which you must fax to Fairport Technologies to obtain your unlock number. This form will list all the Palm Users in your Hot Sync manager’s list.

If you don’t require an unlock code for all users on your list, please indicate that fact on your fax... otherwise you will be expected to pay for each listed user.

As you enter the unlock code for each user, their name will be moved from the “Users” list to the “Registered Users” list

Pocket PC: At start up of the PocketPAM utilities program from your desktop, select Register. Use the Print Registration Form button to generate the form which you must fax to Fairport Technologies to obtain your unlock number.

When you receive the unlock number(s) back from Fairport, use the “Register” button to enter your unlock codes.

Transferring PAM data to your handheld

Do you need to have PAM running to transfer the PAM data to your handheld? No. It is preferable that PAM isn't running, as the PocketPAM Utilities program will update your PAM database tables as it transfers the data from your handheld. If you are also in the process of adding or editing data in PAM itself, a conflict may occur.

Palm OS:

You will need to put your handheld in its cradle, ready to press the Hot Sync button when prompted.

The Hot Sync manager will attempt to synchronise the data for all your installed programs... In order to control (override) the data you want to be synchronised, check the relevant radio button. To understand the Crop Dairy data options, read the Crop Diary section in this manual.

So, the steps are:

- 1) Choose the program to synchronise.
- 2) Select the seasons data to be Hot Synced
- 3) Click on "Step 3: Process & Update Data".
- 4) When the PocketPAM Utilities program is finished its preliminaries and ready to Hot Sync, it will display a message ... Click on the "OK" button then press your Hot Sync button.

If you focus on the bottom of the PocketPAM Utilities screen, you will see the process status.

If you look at the screen of your handheld device, you will see the various files being transferred to and from the two computers.

Once that's done, you're away...!!

PocketPC:

You will need to put your handheld in its cradle.

To understand the Crop Dairy data options, read the Crop Diary section in this manual.

So, the steps are:

- 1 Choose the program to synchronise.
- 2 Select the seasons data to be Synchronised
- 3 Click on “Step 3: Process & Update Data”.
- 4 When the PocketPAM Utilities program is finished its preliminaries and ready to Synchronise, it will display a message ... Click on the “OK” button to continue.

If you focus on the bottom of the PocketPAM Utilities screen, you will see the process status.

If you look at the screen of your handheld device, you will see the progress of the files being transferred to and from the two computers.

Once that's done, you're away...!!

Palm OS Tip: Organising PocketPAM programs on your handheld

This is optional.

On your handheld, you have a “Home” button, which you click when you want to return to the home screen with the list of all the programs, installed on the computer.

These programs can be organised into Categories...

To create a category called PocketPAM do this:

Click on the Category pick-list in the top right hand corner of the Home screen.

Choose “Edit Category”

Now Click “New” ...and create a category called “PocketPAM”... Click “OK”

Click “OK” again to return to the Home screen.

Now we have made the PocketPAM category, we will assign the PocketPAM programs to this new category.

Click on the Menu button (the button below the Home button). On the menu, choose “Category...”

You will see the list of all installed programs on the left and on the right you will see the categories they are assigned to. Locate the PocketPAM series programs and assign them to the PocketPAM category. Click “Done” when finished.

Back at the Home screen; to see your PocketPAM category, either select it from the Category pick-list (in the top right corner)... or click on your Home button until the PocketPAM category is displayed on the screen.

Chemical Records
Fertiliser Records
Machinery Events
Manual Tasks
Planting Records
Crop Monitoring
Harvesting Records
Sundries Consumed
Irrigation Events

Crop Diary

An in-the-field data collection program for your PAM Paddock Activities Diary

When using the PocketPAM Utilities system to transfer data from PAM to PocketPAM you can choose to transfer only the Bare Essentials or you can transfer All Data for a selected season.

Bare Essentials

The following PAM lists are transferred to Crop Diary

- Selected Clients (if you are operating a MultiClient version of PAM)
- Farms and Paddocks
- Cropped Area for the selected season
- All current chemicals, fertilisers, sundries
- All Machinery Operations, Machines, Manual Tasks and your Staff or Contractors
- Harvest classes and harvest destinations
- Irrigation water sources
- Crop Monitoring Items (Weeds, Diseases, Pests, Observations)

All Data

If you choose to transfer All Data for a season, you will have all the above (Bare Essentials) data plus you will have access to your season's records for your

- Chemical Applications
- Fertiliser Applications
- Crop Planting records
- All Machinery and Manual Task Events
- All Sundries consumed records
- All Irrigation records

Limitations

Due to the screen size, limited processing power and memory of the handheld devices, the PocketPAM programs are naturally very cut down versions of the modules within the full PAM program.

The following things are not transferred to PocketPAM and are resolved by the PocketPAM Utilities program when you synchronise your data.

- Prices of your consumables
- Application Units of consumables
- Costs of machinery operations

New list items cannot be added to your lists in PocketPAM. All new items should be added in PAM prior to synchronising. If you forget to add items to your Paddock Activities Notes, Harvest Deliveries and Crop Monitoring records are not transferred from PAM to PocketPAM, only records that have been added in PocketPAM are transferred back to PAM. This means that old records that are deleted or edited in PocketPAM will have no effect on your PAM data.

- Hay, Straw and Fodder production activities are not covered by the Harvesting option in PocketPAM. These entries will have to be done in PAM.
- When viewing all records for either a single paddock or for all paddocks, you will only see listed the first item for each event. For example, when listing all chemical applications for a season, you will only see the first chemical for each job... If you had a tank mix of chemicals, you will be able to see the tank mix details when viewing single jobs but not when listing all jobs.

Buttons on Data Entry Forms

Clear

Use this button to clear all entries and selections you have made on the current page. It's like an «Undo».
TIP: Any chemical or fertiliser you select which has no rate will be ignored by PAM.

Rate & Total Check Boxes

Use these to indicate to PAM whether your Quantities are Rates or Totals

Notes

To associate job notes with any activity, click on the Notes button..

Machinery and Labour

To associate your machinery operation with a chemical or fertiliser application or planting activity, click on the Machinery & Labour button.

Fertiliser

Only available when entering a Planting.
Use this button to enter fertiliser applications that are associated with a planting event

The Planting Details

Cultivar	Qty	R / T
1 ▼ Barley/Sloop	80.....	<input checked="" type="checkbox"/> <input checked="" type="checkbox"/>
2 ▼	0.....	<input type="checkbox"/> <input type="checkbox"/>
3 ▼	0.....	<input type="checkbox"/> <input type="checkbox"/>
4 ▼	0.....	<input type="checkbox"/> <input type="checkbox"/>

Buttons: Clear, Fertiliser, Notes, Machinery & Labour

Adding, Deleting and Navigating in Data Entry Screens

Add a NEW activity record for the current activity/season/farm

Move to First, Previous, Next and Last record for the current farm/season/activity.

Delete unwanted records with the «Del» button

Information and Help

Exit to Main screen

Planting Record

Add ◀◀ ▶▶ Del Exit

08/28/00 2000 CLIFTON

*Paddock: ▼

Area: Total: 35,9

*Area Planted: L.....

View ALL records for the current farm/season/activity.

Up/Down Arrows for moving to the Previous or Next Page

Crop Diary Tips

Important: When you are entering a Planting record and you are planting more than one crop/variety in the paddock, ensure that the Main Crop is entered first. PAM will assume that the main crop is the first crop/variety that you selected.

Only one season's data is transferred to PocketPAM from PAM.

Your PAM configuration or list data (eg. consumables, crops, machinery) are transferred to PocketPAM but the associated costs or the units (eg. Tonnes, Kgs, Litres) are not.

Job Notes associated with your activities in PAM are not transferred to PocketPAM (to save memory space).

When you enter seed, fertilisers and chemicals, use the [R] [T] [%] check boxes to let PAM know that the quantity you have entered is a Rate/Ha or a Total Amount or, in the case of Chemicals, a Percentage of the Water Rate used.

Only records that have been Added in PocketPAM since your last Hot Sync session will be transferred to PAM.

Editing Records: If you Edit a record which has been transferred from PAM to PocketPAM it will not update your PAM records. You should make a note of the need to edit the record in your Palm ToDo list and attend to it when you next run PAM.

If you are entering records other than Planting records in a Paddock which has more than one cropped area for the season (eg. A split paddock or a Summer/Winter cropping scenario) ... ensure you select the appropriate Crop/Variety from the «Crop/Var» picklist.

Q. What happens when you add a record (eg. A fertiliser record) and you don't enter a rate or total quantity? ...

A. PAM will ignore the entry

Q. When I display a list of entries I see some columns with three question marks "???" in them... What does that mean?

A. This indicates that a record has been added but with no details ... or at least no details for the first fertiliser, chemical or crop. PAM will ignore any blank items when the data is transferred from PocketPAM.

Q. What does the Star on an activity data entry screen mean?

A. This indicates that a record has been added since your last Hot Sync session. Only records with stars on them will be uploaded back into PAM.

Q. What are the implications of using PocketPAM with respect to Map Reports and the linking of the records to the Map Objects (Polygons)?


A. If you are recording a Planting and you are planting less than the total arable area of a paddock, you will have to draw your sub-area in PAM.

Therefore, you should enter sub-area planting records in PAM...

If you are treating (chemical, machinery, fertiliser records) the whole of a cropped area or the whole of the arable area (if not in a crop), your PocketPAM records will automatically link to your map reports.

If you are treating less than the total area of the crop or paddock then you will need to later draw in the treated sub-area for your map reports to work correctly.

Reviewing lists of items

 When you click on this button in any of the data entry screens, you will see the list of events for the current Farm/Paddock/Season.

Fertiliser Records		
2000	Show All Records	Back
09 BARN	05/14/00	Mallee Mi

If you want to see the records for all your other paddocks for the current Farm/Season click on the “Show All Records” button.

Fertiliser Records		
2000	Filter by Paddock	Back
09 BARN	05/14/00	Mallee Mi ↑
10 TAMARI	05/18/00	DAP
11 TAMARI	05/02/00	Urea
12 GWINGA	06/14/00	Mallee Mi
14 RUN SO	05/20/00	Urea

Then to return to the current Paddock, click on the “Filter by Paddock” button.

Please Note: When you are reviewing the lists of items, PocketPAM only lists the first item for an event. Eg. If you sprayed a paddock with a tank mix of 3 chemicals, you will only see the first chemicals in that list.

Chemical Records
 Fertiliser Records
 Machinery Events
 Manual Tasks
 Planting Records
 Crop Monitoring
 Harvesting Records
 Sundries Consumed
 Irrigation Events

How to...

Enter a planting record

On the main screen select the **Farm** and **Paddock** and the **Activity** “Planting Records”. Now click on “Enter Records” to go to the Data Entry Screen.

If you have already recorded a planting for the selected Farm/Paddock/Season you will see that record (or at least one of them if there are more than one). To create a new record click on the “Add” button.

If this is the first planting Crop Diary will automatically add the new record for you... You will see **<New Record>** on the screen. This indicates that a new record has just been created for you. You will see that today’s date has been entered for you, the paddock name is already there, the paddock’s arable area is displayed and is used as the default areas for both the cropped area and the worked area.

Make any necessary changes to the areas shown.

When you’re ready to enter the crop type, variety and planting rate information, click on the small Down Arrow button.

Now you can select your crop type and variety from the pick list. You can also enter the planting rate. Either use the “Graffiti” pad or click on the small dot in the corner of the numeric graffiti pad to show the numeric keyboard.

Notice that you can enter in more than one crop type... This is to cater for under-sown pastures and in-fill crops. Remember, the first crop/variety that you select will be the Main Crop in PAM. That is, the crop against which all costs are allocated and the only crop that you can record harvest data against.

If you want to enter the seed used in terms of the total quantity rather than a rate, tick the box under “T”

To enter your planting conditions (Soil Moisture, Row Spacing, Planting Depth), click on the “Conditions” button. When done, click on the Tick Button to return.

To enter the Fertiliser and Machinery records associated with this planting, return to the first data entry screen and click on the appropriate button... “Fertiliser” or “Machinery & Labour”

Enter some Job Notes

Each main data entry screen for each activity in the Crop Diary has a “Notes” button. The notes entered here will become your Job Notes in the Paddock Activities Diary in PAM.

Just click on the “Notes” button to jump to the data entry form for the notes. Up to 256 characters (letters, spaces and numbers) can be entered in each notes box.

Enter a Chemical Applications

On the main screen select the **Farm** and **Paddock** and the **Activity** “Chemical Records”

Now click on “Enter Records” to go to the Data Entry Screen.

If you have already recorded chemical records for the selected Farm/Paddock/Season and you choose to transfer the whole season’s data to your handheld, you will see that record (or at least one of them if there are more than one).

If this is the first chemical record, the program will automatically add a new record for you.... otherwise, to add a new record, click on “Add”. You will see

that today's date has been entered for you, the paddock name is already there, the paddock's arable area is displayed and if you have one or more crops growing in this paddock, the first crop found is displayed and its cropped area is used as the default area for the sprayed area.

Make any necessary changes to the area shown.

When you're ready to enter the chemical tank mix, click on the small Down Arrow button.

Now you can select your chemicals from the pick lists. You can also enter the rate or total amount applied or the percentage of the water rate used. Either use the "Graffiti" pad or click on the small dot in the corner of the numeric graffiti pad to show the numeric keyboard.

If you make a mistake and want to clear all entries on the chemical tank mix screen, click on the "Clear" button.

If you choose a chemical in error, leaving the rate at zero will have the same effect as deleting the chemical when you transfer the data back to PAM.

Chemicals with no rate against them will be ignored.

To enter Spray Conditions and Spray Targets and Chemical Batch Numbers , click on the appropriate buttons. If you are using PAM's inventory system, the Batch Numbers you enter in here will be used to deduct stock from the inventory (as long as you enter them in correctly!), just as it does in PAM. As of Version 1.1 of PocketPAM you can select the batch numbers you had already set up in your PAM Inventory... Click on the Pick (Down Arrow) buttons for each chemical to access the Batch Numbers Screen.

You can enter the machinery and labour details and any job notes from the first data entry screen.

Enter Fertiliser Records

By the time you have read this far, you will have mastered the art of data entry.

Data entry in the Crop Diary is very consistent and very simple.

Entering Plans

Before you set out for a day's work you can set up the jobs for the day ahead in "Enter Plans". The data entry steps are the same as those for entering actual records.

Converting Plans to Actuals

When you actually do the job you had earlier entered as a plan, go back into the "Enter Plans" system, locate the record you created, make any changes that are required and then at the first screen of the data entry click on the ... [Plan->Actual] button.

This will transfer the record into your real records.

Please Note:

- Planned Activities are not transferred back to PAM, only Actuals.
- Harvest Deliveries and Crop Monitoring Records can not be entered as Plans.

Rainfall

The rainfall program can store daily rainfall data for all your rainfall stations. Rainfall data for all stations for the current year is transferred from PAM to the handheld.

You can add more data as your rainfall events occur.

Whenever you want, simply Hot Sync your data back to PAM using the PocketPAM Utilities program.

Entering Data

Start the Rainfall program, select the appropriate rainfall station from the list and click on “Add / Check Rainfall Data”

The next screen is not the data entry screen but a review screen. From this screen you can:

- View all records for the current Station/year
- Add a new rainfall record (use the “Add New” button)
- Edit the currently displayed record (use the “Edit Current” button)
- Delete the currently displayed record (use the “Delete” Button)
- Return to the Rainfall Station Selection (or Main) screen (use the “Back” button)

To ensure your rainfall data is transferred to and from PAM, click the Rainfall check box on the PocketPAM Utilities screen. Then simply click on the



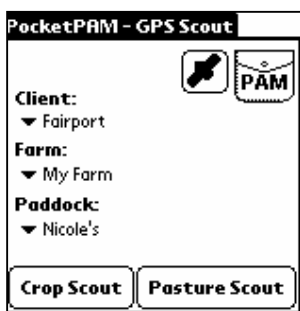
Step 3: Process & Update Data

“Process and Update Data” button

GP Diary

The GP Diary program can store your personal daily diary notes. PAM GP Diary notes are not transferred from PAM to PocketPAM but all notes entered in PocketPAM will be added into your PAM GP Diary notes.

Whenever you want to add your PocketPAM notes into your PAM GP Diary, simply Hot Sync your data back to PAM using the PocketPAM Utilities program. Just make sure you have “GPDialry” ticked before you click on the “Step 3” button.



GPS Scout

The GPS Scout program can be used to record geo-located records for both Crop and Pasture Monitoring.

Although the program can be used in conjunction with a GPS, it is not essential... meaning,

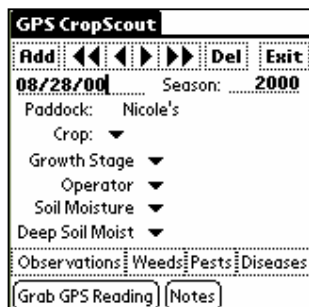
- you can use GPS Scout to record monitoring data which is not geo-located and;
- you can have a GPS unit which is not connected to your handheld computer and simply type into GPS Scout the coordinates.

Running the program is very much like running the Crop Diary program. You select the Farm and Paddock then the Activity... either Crop or Pasture monitoring.



Use this button to access the screen to set up the GPS communication protocols. The default settings should work with Garmin GPS systems. To enter the correct settings from your GPS unit, refer to your GPS documentation.

Crop Monitoring



In the Crop Monitoring system,

select the Crop Type growing in the paddock

The Crop Growth Stage and any of the other information you want to record about the site.

From here you can select one of the monitoring types...

Observations, Weeds, Pests or Diseases.

If you are collecting the coordinates for this site (it's optional), click on the "Grab GPS Reading" Button to get to this screen...

Clicking on the "Grab GPS Reading" Button will commence taking readings from the connected GPS unit. Once a successful reading has been taken you can go "Back" to the previous screen.

Please Note: If you don't have a GPS connected to your handheld but you want to record the coordinates, enter them manually as either Degrees, Minutes and Seconds or as Decimal Degrees. ... then click on "Back"

When done, click on "Back" to return to the previous screen.

Entering your crop monitoring data is quite an easy task. GPS Scout provides for up to 4 readings per site for an unlimited number of monitoring items.

From this screen you can:

- Add a new record for a site
- Edit the details of the currently displayed record
- Delete the currently displayed record
- Scan forwards and backwards through any other records you may have for the current

Farm/Paddock/Monitoring Item Type.

When you click on "Add New" you will see this screen:

At this screen you can only add new data or edit existing data...

Select the Monitoring Item from the pick-list then enter the readings.. up to four of them.

When done, click "Back". You will be returned to the previous screen. The one shown above.

Transferring your data to PAM.

The data entered in GPS Scout is transferred back to your computer in a formatted text file. The file contains the coordinate data and all other data collected. These data files can be imported into PAM. Check for the special option under the Utilities menu. (Available in PAM version 1.4 or later).

The data is not automatically transferred to PAM due to the need to create the point objects on your map as well as create the crop monitoring records.

The file name created will be displayed after the Hot Sync process is completed. This file can then be imported into PAM or emailed to a remote PAM user if that is appropriate.

Pasture Monitoring

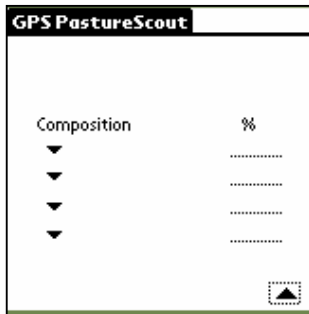
Entering a pasture monitoring record is quite simple and similar to entering records in the Crop Diary and in the CropScout module within this GPS Scout program.


Firstly check the data. Click on the data field to change it (a calendar will pop up to make this easier for you).

If you are working with a GPS, click on the “Grab GPS Reading” button to access the GPS screen.

Clicking on the “Grab GPS Reading” Button will commence taking readings from the connected GPS unit. Once a successful reading has been taken you can go “Back” to the previous screen.

Please Note: If you don't have a GPS connected to your handheld but you want to record the coordinates, enter them manually as either Degrees, Minutes and Seconds or as Decimal Degrees. ... then click on "Back"



Clicking on  the button from the main screen will take you to the second pasture monitoring screen which enables you to enter the percentages of each pasture species at the monitoring site.

The data collected with this module will be saved in a formatted text file on your computer after a Hot Sync session.

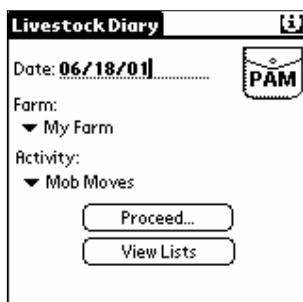
This data can then be imported into PAM via a special "Tools" menu option in the pasture monitoring screen in PAM.

The data is not automatically transferred to PAM due to the need to create the point objects on your map as well as create the crop monitoring records.

The file name created will be displayed after the Hot Sync process is completed.

This file can then be imported into PAM or emailed to a remote PAM user if that is appropriate.

This import option will be in PAM version 1.4 and later.



PocketPAM Livestock

Important preamble:

As you would be aware, PAM's livestock system maintains a "live" inventory of livestock. As you move stock from one paddock to another the pick lists of mobs in paddocks is automatically and instantly updated.

Because of this we can only have livestock active on one computer at a time. It would be a disaster if you were moving stock on PocketPAM while someone else was moving stock on the desktop computer. The mob-paddock pick lists would be instantly out of synchronisation.

So, when you log out your livestock data to PocketPAM, the desktop computer's PAM system becomes "View Only". You can choose to make your PocketPAM Livestock system "View Only" instead. This means you can view a list of mobs in paddocks on PocketPAM, but that's all.

What PAM data is transferred to PocketPAM?

Your current mob – paddock list and your lists of mob codes (or stock classes) and your lists of veterinary treatments and supplementary feeds only. Unlike the Crop Diary, you don't get a listing of previously entered records. You can however, view the records you add on PocketPAM using the "View Lists" option.

As PocketPAM is specifically designed as a data entry device that should be used in the field to enter data as it happens, we do not provide any deleting and editing of livestock moves. We expect that you will be inclined to enter data more accurately when you are entering in real time.

However, if you accidentally move a mob into the wrong paddock, simply move it to the correct paddock immediately.

Sales, purchases, treatments and numbers changes records will be editable in one of the next releases of PAM. Therefore you should make a note of the records to be edited and deal with them later.

Using the software.

Steps:

Choose the Date

Choose the Farm

Choose the Activity

Choose Proceed...

If you have chosen any activity except *Purchases* you will see the mob-paddock pick list. Choose the mob you are dealing with and click on “Proceed”.

Moves

On the main screen, select the Date, Farm and the Mob Moves activity...then click “Proceed”

Only one mob can be moved at a time. Multiple moves into multiple paddocks is beyond the scope of the PocketPAM system.

So at the screen entitled “Mob Moves – Select Mob”, pick the mob to move and then click “Proceed...”

The Livestock Movements screen shows the move date, the mob code, the paddock you are moving them from...

If you want to record number changes, click on the “Record Number Changes” button... If you choose this option and change the tally of the mob you are moving, those changes are recorded first. The tally on the Livestock Movement screen will alter to show the new tally in the mob.

If you want to change attributes of a mob as you move them, click on the “Alter Attributes” button...

Enter the number you are moving. If you enter less than the total tally, the balance will be left in the original paddock

Select the Destination Farm and Paddock

Click “OK” to complete the move or “Cancel” to abort.

If you want to attach a job note to the move, click on the “Job Notes” button.

You will return to the “Mob Moves – Select Mob” screen to select the next mob for moving. If you have finished with this activity, click on “Return to Main Screen”.

Treatments (and Supplementary Feeds):

On the main screen, select the Date, Farm and the Treatments activity...then click “Proceed”

Select the mob to be treated

Click “Proceed”

For Treatments: Now choose the Operation, Consumable and Method (if you want to)

For Feeding: Now choose the Consumable and Method (if you want to).

Enter the tally treated.

Enter a Rate or a Total (if Rate, tick the “Rate” check box).

If there was a labour cost, enter it.

If there were staff involved, choose the labour by clicking the “Labour” button... then select up to 3 staff from the lists provided

If there is a Batch Number either select it from the filtered list of Batch Numbers or enter it in the space provided.

When you select Treatments or Supplementary Feeds, PocketPAM immediately creates a record. If you have arrived at this screen in error or if you want to abandon the record, choose “Delete”. Of course to keep the records click “OK”.

You will return to the “Treatments – Select Mob” screen to select the next mob for treatment... or to select the same mob again for another treatment. If you have finished with this activity, click on “Return to Main Screen”.

Alter Attributes:

On the main screen, select the Date, Farm and the Alter Attributes activity...then click “Proceed”

Select the mob to be altered

Click “Proceed”

On the Alter Attributes screen you can change a mob’s Name, Livestock Units rating, Average Mob Body Weight, Condition Score.

When you have made your changes, click “OK”. Click “Cancel” to abort.

You will return to the “Alter Attributes – Select Mob” screen to select the next mob you want to alter. If you have finished with this activity, click on “Return to Main Screen”.

Alter Numbers:

On the main screen, select the Date, Farm and the Alter Numbers activity...then click "Proceed"

Select the mob to be altered

Click "Proceed"

On the Alter Numbers screen you can enter Deaths, Rations, Losses, Strays and Tally changes. You can also enter the cause of death.

When you have made your changes, click "OK". Click "Cancel" to abort.

You will return to the "Alter Numbers – Select Mob" screen to select the next mob you want to change. If you have finished with this activity, click on "Return to Main Screen".

Sales:

On the main screen, select the Date, Farm and the Sales activity...then click "Proceed"

Select the mob to be altered

Click "Proceed"

On the Sales screen you can select the Sales Class and the number sold.

When you have entered the required information, click "OK". Click "Cancel" to abort.

You will return to the "Sales – Select Mob" screen to select the next mob you want to sell. If you have finished with this activity, click on "Return to Main Screen".

The Create New Stock Class (Mob Code) Screen:

You will see this screen when you create a new mob in the any of Purchases, Births and Split/Join activities. On this screen you create a new mob or stock class by selecting the Category, Sub-Category, Sex, Year and Tag of the new stock class. You can also supply a name for the new stock class.

Click “Cancel” to abort the creation or “OK” to save and exit.

Purchases:

On the main screen, select the Date, Farm and the Purchases activity...then click “Proceed”

You will now see the Livestock Purchases screen.

Here you create the newly purchased mob by either adding the numbers into an existing stock class or by creating a new stock class.

Having either selected an existing stock class or creating a new one, enter the number purchased, the price per head and any miscellaneous costs.

Click “Total” to see the overall cost of the purchase.

Click “Cancel” to abort the activity or “OK” to save and exit.

Births:

On the main screen, select the Date, Farm and the Births activity...then click “Proceed”

On the next screen, select the Mothers mob... then click “Proceed”.

On the Record Births screen, enter the number of offspring, then select or create the mob code for the offspring. If you need to you can create up to three new mobs. This enables you to create a male mob, a female mob and a neutered mob in the one operation.

Enter the number of offspring for each of the new mobs you create.

To abort this job, click on “Cancel”, to save click on “OK”

You will return to the “Births – Select Mother’s Mob” screen to select the next mob you want to alter. If you have finished with this activity, click on “Return to Main Screen”.

Splits and Joins:

On the main screen, select the Date, Farm and the Splits & Joins activity then click “Proceed”

Select the mob to be split from then Click “Proceed”

On the Split/Join Stock Class screen you do as follows:

- Enter the number to be split off
- Select or Create the first mob to split to
- If required, select or create the second and third mob.
- To abort this job, click on “Cancel”, to save click on “OK”

You will return to the “Splitting – Select Mob” screen to select the next mob you want to alter. If you have finished with this activity, click on “Return to Main Screen”.

View Lists System

Click on the “View Lists” button to access the View Records screen.

From here you can view records that were added since the last Hot Sync. Mob Whereabouts, Consumables, Categories and Sub-Categories and Stock Classes (Mob Codes) will be shown even if you haven’t entered any records since the last Hot Sync.

New Consumables can be added in PocketPAM. Click on the “Add New” button to add a new consumable.

When adding a new consumable, please be sure to select its’ associated activity, the purchase and application units.



PocketPAM Inventory

The PocketPAM Inventory program will perform all the tasks of your PAM desktop inventory system. All historical records from your PAM Inventory are transferred to the handheld.

To view all historical records use the navigation buttons across the top of the screen or use the “Browse” button

Please Note : You can't edit the data on this main screen. It is a view only screen. To add a new item, make a stock adjustment, edit a record or to delete a record, use the buttons provided.

Important Hot Sync Information

As you enter new purchases with new Batch Numbers, the new Batch Numbers will be available in the Crop Diary and the Livestock Diary. Also, newly added consumables in the Livestock Diary will be available in the Inventory program. The three programs are integrated. Therefore...

When you perform a Crop Diary or a Livestock sync, your Inventory data files are automatically transferred at the same time. This means therefore that you may never need to perform a sync for your Inventory data on its own.

If you are operating your Crop Diary as a MultiClient system, the Inventory system only relates to your PAM Master Dataset.


The Buttons ...

Purchases

Use this button to either start a new inventory record as the result of a new purchase or to enter the opening stock level of a consumable.

Click on this button to see the inventory details screens...

Note that you can add new Packages on the Add Purchase screen. Just click on the “New” button

To go from the first screen to the second just click on the  down button.

Notice that in PocketPAM we are dealing exclusively in “Packages”. You can always edit Inventory records later in PAM, but if you know the cost per Pack, you can enter that information in PocketPAM.

Adjustments

If you perform a stock take and you need to alter the stock levels of an item, use this button.

Select the appropriate record using the navigation buttons. Click on the Adjustment button

Movements

To move a quantity of packages from one inventory location to another click the Movement button.

When you perform this operation, Pocket PAM will do the following;

1. Create a record to show that you have removed a quantity of packages from the original location. (This is stored as an adjustment record with a negative value).
2. Create a record to show that the packages are now stored at the new location. (This is stored as an adjustment record with a positive value).

Delete

This button simply deletes the current record. Note that you can only delete records that have been added since your last sync.

Edit

This button enables you to edit the current inventory record. Note that you can only edit records that have been added since your last sync.

Records added since your last sync are indicated by the ★ on the main screen. Only those records that display this star are sent back to your desktop PAM.