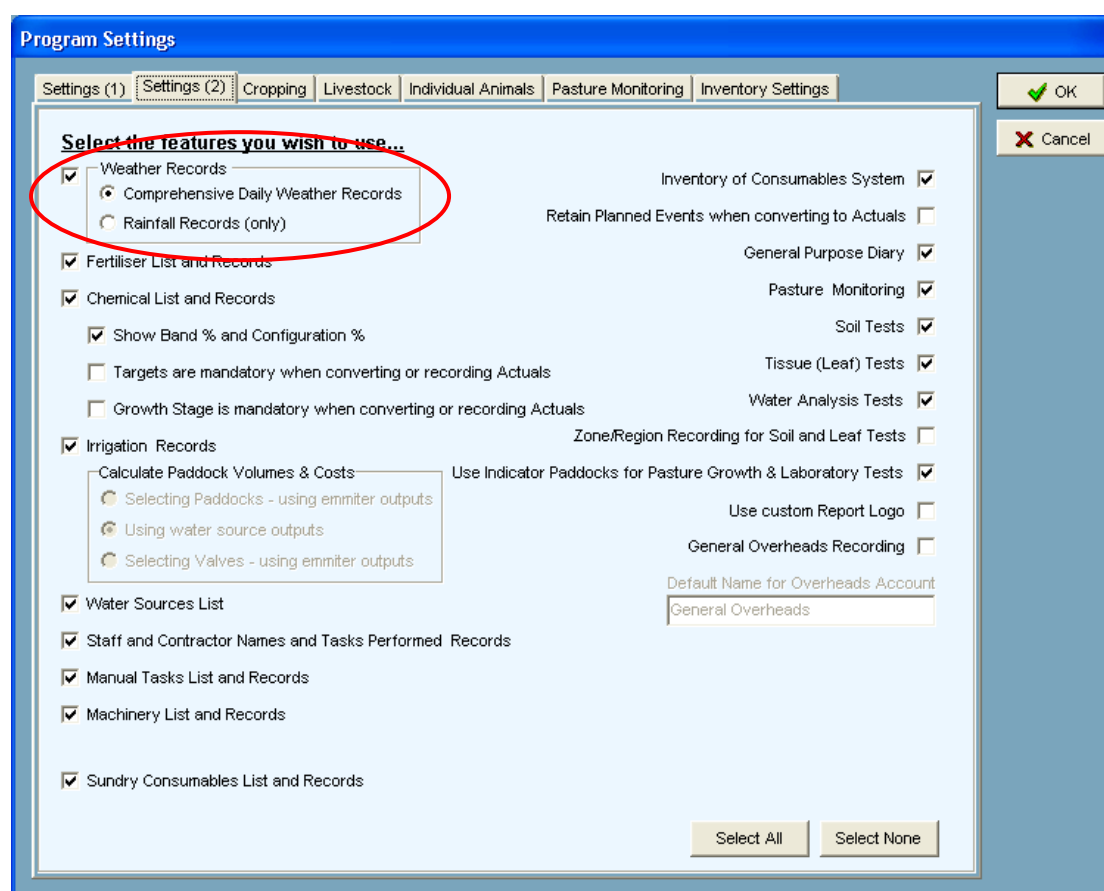


Comprehensive Weather

Version 6.7 of PAM introduces a new optional way of tracking weather conditions. A long awaited feature which enables you to record minimum and maximum humidity and temperature along with your daily rainfall.

1.0 Configuration Screen

There is a new option in the Customise Your PAM Program under the Configuration menu which allows you to activate the new weather options.



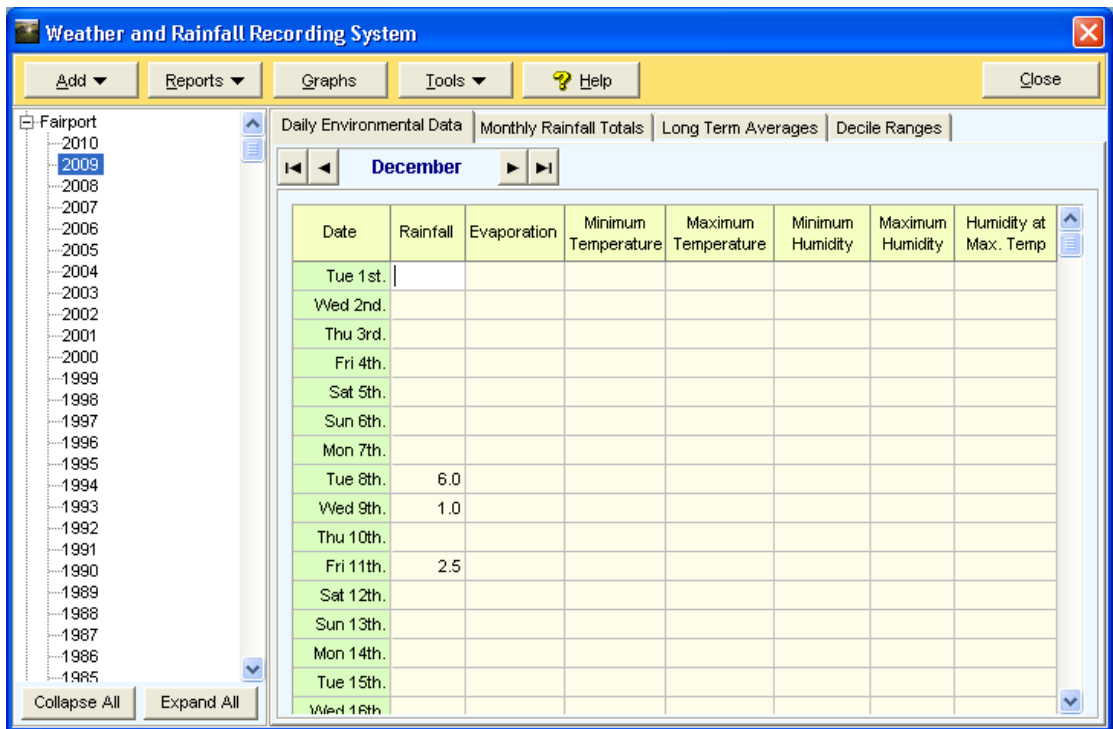
Select “Comprehensive Daily Weather Records” from the “Settings (2)” tab.

- Please note that any open screens will close during a quick program refresh.

2.0 Data Entry

2.1 Using the Rainfall Records screen

The Daily Environmental Data screen is now completely new:



There are now options to include not only the original rainfall data, but also minimum and maximum temperature and humidity information for better reporting.

Data entry is done simply by typing the values into the correct date.

3.0 Reporting Weather

There are new facets to reporting weather...

3.1 Weather Reports

Under the Reports menu the Daily Weather Data menu has been modified to include the new information.

Year	Date	Rainfall	Evaporation	Min Temp	Max Temp	Min Humidity	Max Humidity	Humidity at Max Temp
2009	8/12/2009	6						
2009	9/12/2009	1						
2009	11/12/2009	2.5						
2009	17/12/2009	6.5						
2009	18/12/2009	4						

Please contact us if you need any further help on Weather Data Entry in PAM.