



## IAR – Off Farm Animals - Help Note

### Index:

Why would you need Off Farm Animals? .....	2
How do I set up a list of Off Farm animals .....	2
How do I set up Off Farm animals if I accidentally forgot to tick the check box .....	2
How do I set up Off Farm animals if I accidentally forgot to tick the check box .....	3
How do I use my list of Off Farm animals? .....	4

### Why would you need Off Farm Animals?

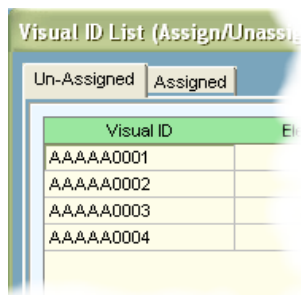
Answer: When you use semen from a an off-farm sire during AI mating or if you have a stud and want to include the dead or off-farm ancestors of your current animals in their bloodline family tree.

### How do I set up a list of Off Farm animals

You will set up these individual animals in the same way you set up individuals that are on your farm.

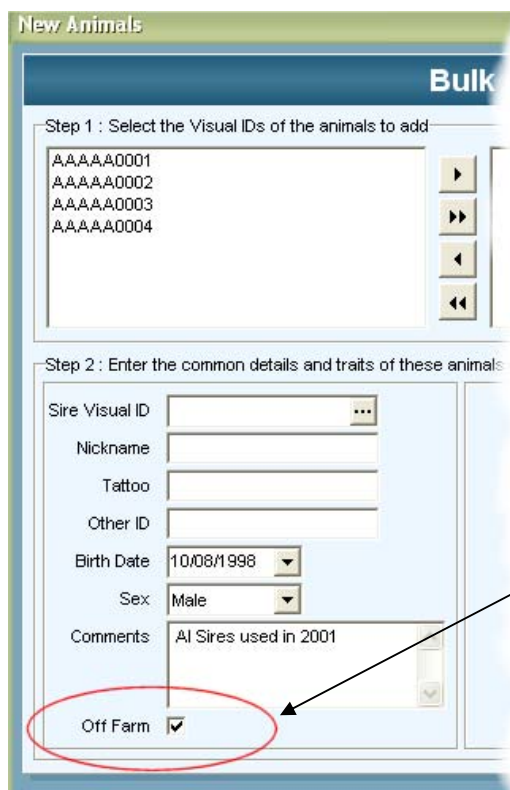
Let's look at creating 4 new Males

Create the TAGS (Individual Animals -> Visual ID List then "Create...")



Then go to (Individual Animals -> New Animal List "Bulk Add...")

Make sure that as you assign your 4 new tags to their animals, you tick the "off Farm" check bx.



Note the "Off Farm" Check Box.

This is the key to the system. If you forget to do this, you can rectify the situation later... see below.

## How do I set up Off Farm animals if I accidentally forgot to tick the check box

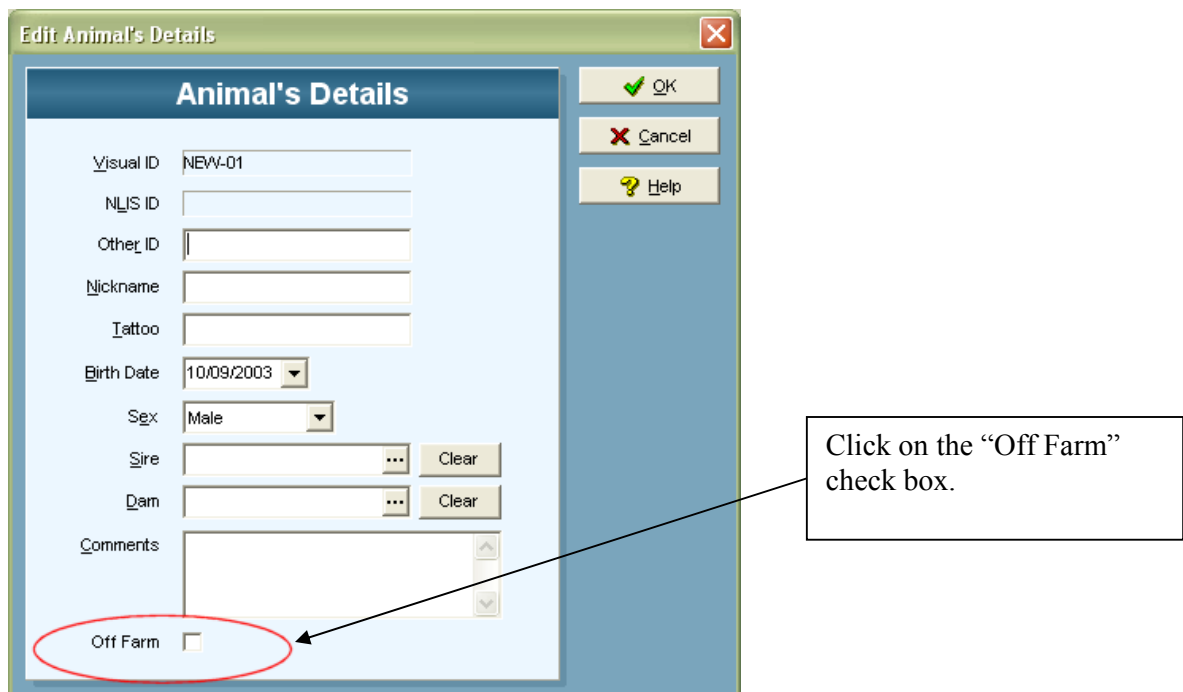
If you have assigned the tags to animals but have not yet assigned the tagged animals to a mob then you will see your tagged animals in the Individual Animals -> New Animal List window like this ...



Don't despair !!

Go to the main Individual Animals window... Individual Animals -> Individual Animal Records... And use the "Show Animals" button ... and choose "All Animals Unassigned to Any Mob" option. This will display all your tagged animals that do not belong to a PAM mob (or stock class).

Choose each tagged animal one by one and click on the "Edit..." button

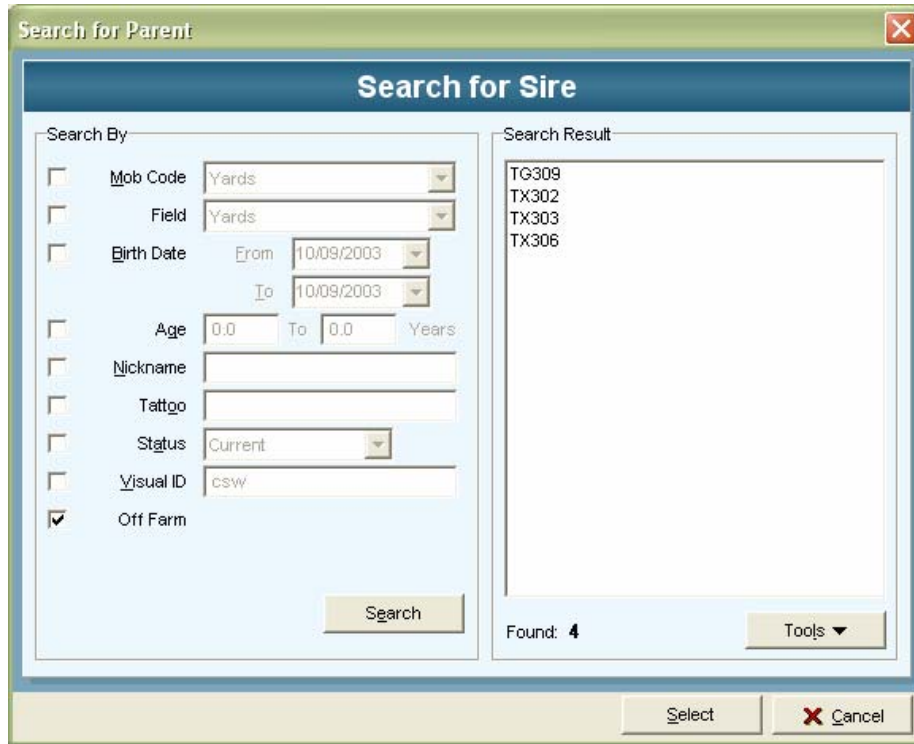


Please Note: If you have created tagged animals and put them in PAM mobs but in fact they should belong to the Off Farm list, you can use "Edit..." and rectify that here as well.

**How do I use my list of Off Farm animals?**

Example 1:

Searching for a SireID when editing the details of one of your animals... on the "Search for Sire" dialog click the "Off Farm" check box and then click on the "Search" button... this will display a list of all the Off Farm Sires.



Example 2:

When recording Matings in the livestock Add Wizard, you can choose your Sires from this dialog

