



## Harvested Produce – On Farm Storage - Help Note

### INDEX:

<b>INTRODUCTION</b> .....	<b>1</b>
<b>ACTIVATION &amp; CONFIGURATION</b> .....	<b>2</b>
TURN ON INVENTORY OF CONSUMABLES: .....	2
TURN ON INVENTORY OF HARVESTED PRODUCE: .....	2
CONFIGURE YOUR ON FARM HARVEST LOCATIONS: .....	3
<b>ADDING YOUR HARVEST PRODUCE TO THE INVENTORY OF HARVESTED PRODUCE</b> .....	<b>4</b>
<b>THE INVENTORY OF HARVESTED PRODUCE</b> .....	<b>4</b>
SELL/USE/TRANSFER HARVESTED PRODUCE: .....	5
<i>Sold Commercially</i> .....	5
<i>On Farm Stock Feed</i> .....	5
<i>On Farm Crop Seed:</i> .....	6
<i>Transfer Location:</i> .....	6
HIDE SOLD OR USED PRODUCE ITEMS:.....	6

### Introduction

The PAM data management system allows you to deliver your harvested produce to an on farm storage location. By having the on farm storage location, you are then able to keep an inventory of your harvested produce. Further, if you transferred that harvested produce stored on farm to your inventory of consumables system you may use that produce for seeding etc...

For example:

A crop of sorghum has been planted, grown and harvested. During the harvest of the sorghum crop, the grain from that crop is delivered to an on farm storage location. That produce may be sold / used or transferred using the Inventory of harvested produce.

From the inventory of harvested produce this produce may then be:

- **Sold Commercially:** The harvested produce may be sold via the Inventory of Harvested produce system and reports for the sales generated via the reports menu.
- **Transferred to On Farm Stock Feed:** The feed produce may then be selected via pick lists during a livestock supplementary feeding activity. This option will have the harvested produce appear in the Inventory of Consumables
- **Transferred to On Farm Crop Seed:** The seed produce may then be selected via pick lists during a Crop Seeding and Planting activity. This option will have the harvested produce appear in the Inventory of Consumables
- **Transfer Location:** The seed may be moved from on farm storage destination to on farm storage destination as the need arises.

### **Activation & Configuration**

To activate the Inventory of harvested produce and have the produce available for on farm stock feed, seed stock etc, we will need to activate both the Inventory of consumables and the Inventory of harvested produce.

#### **Turn on Inventory of Consumables:**

Menu: Configuration -> Customise your PAM QA Plus program -> Settings (2) tab

Ensure that the  Inventory of Consumables System is checked, this will activate the following menu option:

Data Entry	
Paddock Activities Diary...	F7
Paddock-Season View...	F8
Paddock Budget View...	
<hr/>	
Livestock Activities Diary...	F9
Wool Records...	
<hr/>	
Soil, Sap, Leaf and Water Tests	▶
Pasture Composition and Quality...	
<hr/>	
Rainfall Recording System...	F11
<hr/>	
Inventory of Consumables...	
Inventory of Harvested Produce...	
<hr/>	
Quality Assurance Records...	▶
<hr/>	
Exit from PAM	Alt+F4

#### **Turn on Inventory of Harvested produce:**

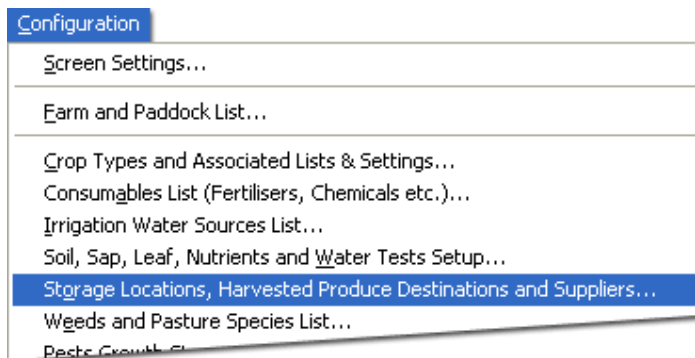
Menu: Configuration -> Customise your PAM QA Plus program -> Cropping tab

Ensure that the  Inventory of Harvested Produce is checked, this will activate the following menu option:

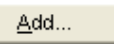
Data Entry	
Paddock Activities Diary...	F7
Paddock-Season View...	F8
Paddock Budget View...	
<hr/>	
Livestock Activities Diary...	F9
Wool Records...	
<hr/>	
Soil, Sap, Leaf and Water Tests	▶
Pasture Composition and Quality...	
<hr/>	
Rainfall Recording System...	F11
<hr/>	
Inventory of Consumables...	
Inventory of Harvested Produce...	
<hr/>	
Quality Assurance Records...	▶
<hr/>	
Exit from PAM	Alt+F4

## Configure your On Farm Harvest Locations:

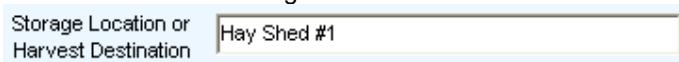
Menu: Configuration -> Storage Locations, Harvest Produce Destinations and Suppliers



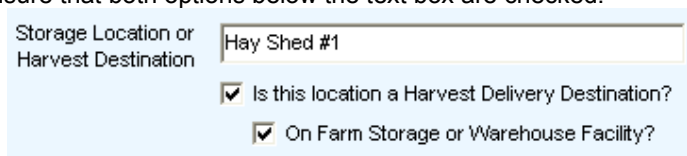
On the Storage Locations & Harvested Produce Destinations tab, click the



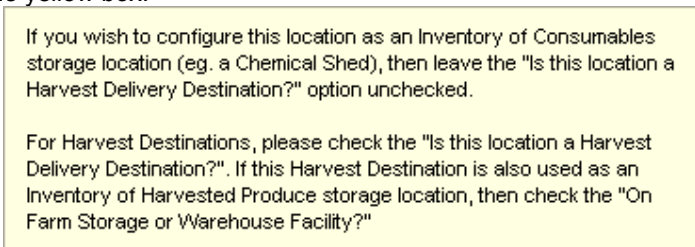
button. Then enter the name of the storage location:

A form with a text input field. The label 'Storage Location or Harvest Destination' is on the left. The text 'Hay Shed #1' is entered into the input field.

To enable the harvested produce to be entered into the Inventory of Harvest Produce, you will need to ensure that both options below the text box are checked:

A form with a text input field and two checkboxes. The label 'Storage Location or Harvest Destination' is on the left. The text 'Hay Shed #1' is entered into the input field. Below the input field, there are two checkboxes, both of which are checked. The first checkbox is labeled 'Is this location a Harvest Delivery Destination?' and the second is labeled 'On Farm Storage or Warehouse Facility?'.

If at any stage you become confused about the meaning of these check boxes, please read the notes in the yellow box:



The newly added Harvest Delivery destination will now appear within the Harvest Destination drop down list during the harvest activity in the Cropping add activity wizard. You may also enter/edit Harvest Delivery destinations via the tools button with in the Harvest Delivery activity.

## Adding your harvest produce to the Inventory of Harvested Produce

During the Harvest Delivery activity in the Add Activity wizard, once you have reached the Harvest Delivery detail screen, ensure you select the Harvest destination that you have previously configured. Continue with the rest of the harvest delivery operation until complete.

Harvest Delivery										
Job Date : 30/01/2003										
Class or Grade	Load ID	Delivered to...	Total Units	Monitoring	Base Price	Discounts (\$/Unit)	Premiums (\$/Unit)	Total Value	Net Price (\$/Unit)	Net Price
DURU		Hay Shed #1	38.4 T	(space)	\$230/T	\$0/T	\$0/T	\$8,832.00	\$230/T	\$230/T

## The Inventory of Harvested Produce

You can enter the Inventory of Harvested produce by selecting the menu option:  
Data Entry -> Inventory of Harvested Produce

Data Entry	
Paddock Activities Diary...	F7
Paddock-Season View...	F8
Paddock Budget View...	
Livestock Activities Diary...	F9
Wool Records...	
Soil, Sap, Leaf and Water Tests	▶
Pasture Composition and Quality...	
Rainfall Recording System...	F11
Inventory of Consumables...	
Inventory of Harvested Produce...	
Quality Assurance Records...	▶
Exit from PAM	Alt+F4

Inventory of Harvested Produce							
<input type="button" value="Help"/> <input type="button" value="Browse"/> <input type="button" value="Close"/>							
<input type="button" value="Sell/Use/Transfer Harvested Produce"/> <input type="button" value="Delete Sale Records..."/> <input type="button" value="Alter Stock Levels..."/> <input type="button" value="Reports"/> <input type="button" value="Tools"/> <input type="button" value="Sort By"/>							
Last Transaction Date	Location	Crop Name	Crop Variety	Class or Grade	Total Units	Maximum Price	
▶ 12 Mar 2004	Hay Shed #1	Lucerne	Hunter River	HAY1	35	\$148.00	
<input checked="" type="checkbox"/> Hide Sold or Used Produce Items?							

After your Harvest Delivery activity is complete, you will find that harvested produce appear in the Inventory of Harvested produce screen. We will not cover all of the functionality of this component of PAM, however, we will cover the major aspects of the system.

### Sell/Use/Transfer Harvested Produce:

After selecting the harvested produce that you wish to sell/use or transfer, select the **Sell/Use/Transfer Harvested Produce** button. You will then be able to enter the details for the modification to the produce.

Sales, Use or Transfer Record...

**Sell, Use or Transfer Harvested Produce**

From Storage: Hay Shed #1

Crop: Lucerne

Variety: Hunter River

Class or Grade: HAY1

Quantity: 35

Price: \$148.00

Date: 12/03/2004

Sold, Used or Transfer To: [Dropdown Menu]

- Sold Commercially
- On Farm Stock Feed
- On Farm Crop Seed
- Transfer location

OK

Cancel

Help

#### *Sold Commercially*

You may sell your harvested produce that has been stored on farm for a period of time, this information can be reported on via the reports button within the Inventory of Harvested Produce screen.

#### *On Farm Stock Feed:*

By entering the harvested produce as on farm stock feed another drop down list will appear so that you may select type of feed that this harvest produce is, If the type of feed is not in the list, you may enter a new type of feed at this point.

Sold, Used or Transfer To: On Farm Stock Feed

Consumables Item: [Dropdown Menu]

- Oats
- Barley Feed
- Duram Feed

New...

This operation will enter the harvested produce into the Inventory of Consumables as a Supplementary Feed, of which will show up in the Livestock diary Supplementary Feeding activity.

**On Farm Crop Seed:**

This operation will enter the harvested produce into the Inventory of Consumables as a Crop Seed.

After applying On Farm Crop Seed transfer, it is strongly recommended that you now hop into the Inventory of Consumables to allocate a batch number to the Crop Seed (you can do this by double clicking on the newly added crop seed record in the Inventory of Consumables) and entering the batch number in the appropriate space).

When you enter your Seeding and Planting operation next season you will need to select the appropriate batch number for this seed so that your stock on hand is kept true and correct.

Seeding and Planting Details								
Variety	Seed/Plant Cost	Sow/Plant Rate	Total Units	Batch Number	Sow Depth (cm)	Row Spacing (cm)	Main Crop	Cost Per Ha
Hunter River	\$0.00/T	8 Kg/Ha	235.84 Kg	...	0 cm	0 cm	<input checked="" type="checkbox"/>	\$0.00

After clicking in the Batch Number field a button with 3 dots will appear, click this to open the batch number selection screen. From here, you may select the batch number(s) that you entered for the harvest produce last season and the percentage of that batch number used for the activity (see below).

**Pick Batch Numbers**

Batch Numbers			
Batch Number	Location	Quantity	Percentage (%) of Consumable
From Pdk #3	Hay Shed #1	235.84 Kg	100

Total Quantity for Item : 235.84 Kg      Totals : 235.84 Kg      100%

Tip: Press F10 to save and exit

Buttons: +, -, ✓, ✕

Buttons: OK, Cancel, Help

**Transfer Location:**

This operation simply transfers the location that the harvested produce is currently stored.

**Hide sold or used produce items:**

Checking 'Hide Sold or Used Produce Items'  Hide Sold or Used Produce Items? removes any harvested produce from the currently visible list of harvested produce, it also remove the sold or used harvested produce from the reports that are available via the reports menu:

Reports

- Stock on Hand Report
- Transactions Report...
- Stgred Harvest Sales...