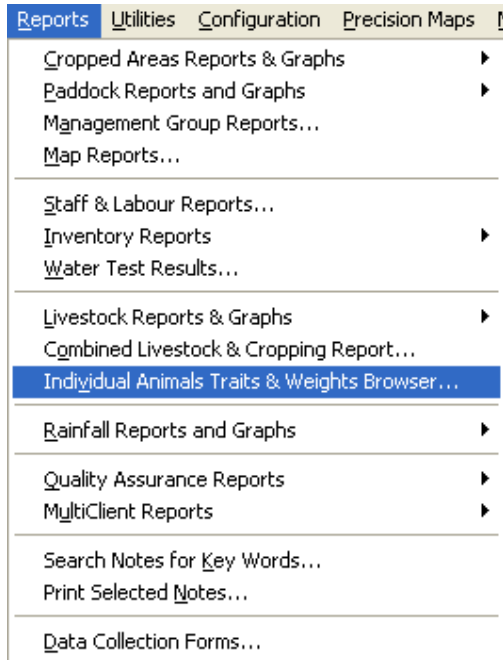


IAR Daily Live Weight Gain – How To...

The PAM IAR formula builder gives you the flexibility to manipulate your data to view the information that YOU want to view.

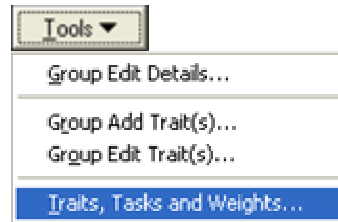
The following instruction set is how to obtain Daily Live Weight Gain information from your existing trait data.



From the menu bar of PAM, select:

Reports -> Individual Animal Traits & Weights Browser...

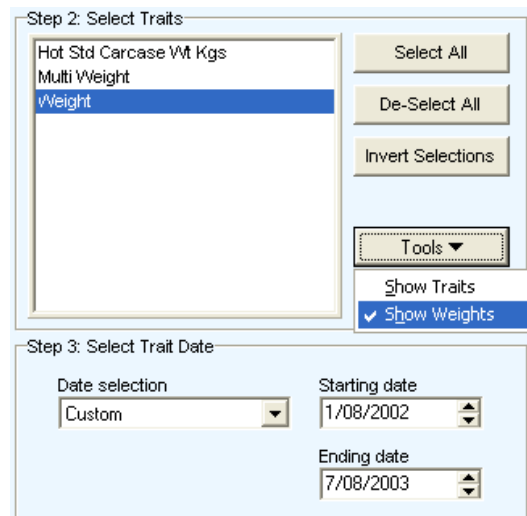
You can also get to the Weights and Traits browser via the IAR screen:



Once in the Trait Browser:

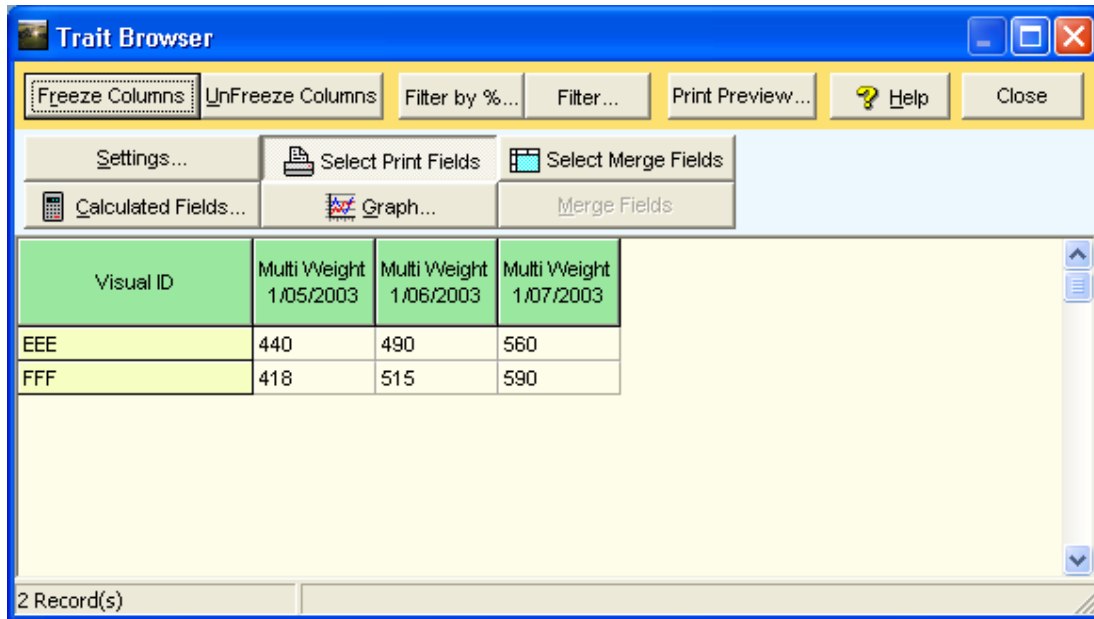


Show the animals you wish view the traits on and make your selection from the resulting list.



Select the weight trait that you wish to use to gain the Daily Live Weight Gain.

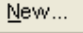
Click  View Data to enter the Trait Browser Screen:

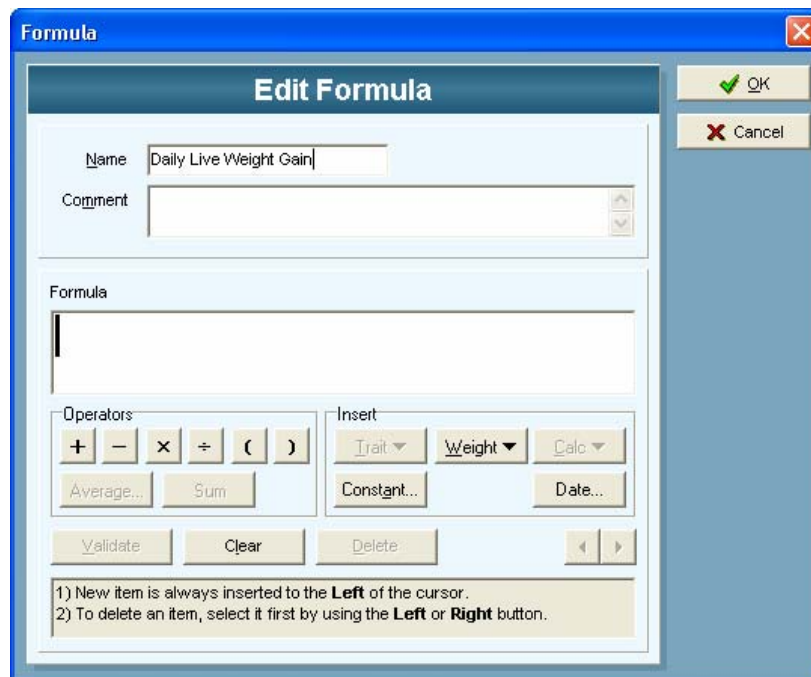


Visual ID	Multi Weight 1/05/2003	Multi Weight 1/06/2003	Multi Weight 1/07/2003
EEE	440	490	560
FFF	418	515	590

2 Record(s)

Here is where we build our Daily Live Weight Gain Formula, click  Calculated Fields...

In the Apply formula screen, we want to click  New... to start building the new formula.



Formula

Edit Formula

Name: Daily Live Weight Gain

Comment:

Formula:

Operators: +, -, x, /, (,)

Insert: Trait, Weight, Calc, Constant, Date

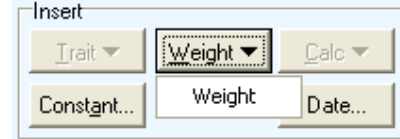
Buttons: Validate, Clear, Delete

1) New item is always inserted to the **Left** of the cursor.
2) To delete an item, select it first by using the **Left** or **Right** button.

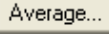
Now...enter the name you would like to give the formula and any memory-jogging information you would like into the Comment field.

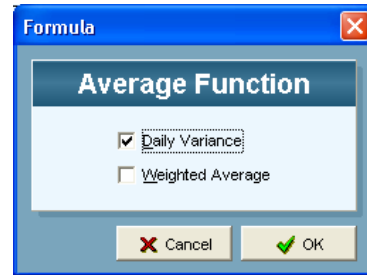
From here, we need to select the weight field that we will use to calculate the daily weight gain. Select:

Weights -> 'Your Weight Trait'



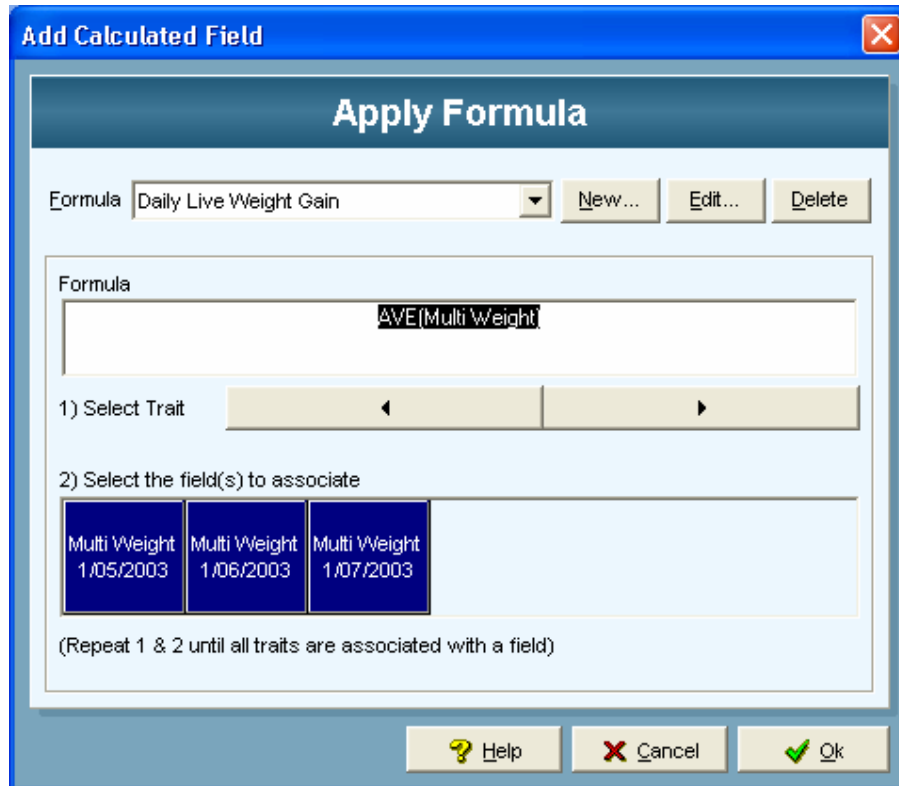
To apply the average function on the weight selected we will need to select the weight in the formula window by selecting the  button.

We now need to select the  button and from the resulting Average Function screen, select 'Daily Variance' and click OK.



You will now see your formula: AVE(Your Weight Trait).

From here click OK, select the fields that you would like to be included in the average weight calculations, then click OK... ALL DONE... you will see a new field in the grid that represents the daily live weight gain for the selected animals.



RESULTING INFORMATION

The screenshot shows the 'Trait Browser' application window. The interface includes a menu bar with options like 'Freeze Columns', 'UnFreeze Columns', 'Filter by %...', 'Filter...', 'Print Preview...', 'Help', and 'Close'. Below the menu bar are several toolbars with icons for 'Settings...', 'Select Print Fields', 'Select Merge Fields', 'Calculated Fields...', 'Graph...', and 'Merge Fields'. The main area contains a table with the following data:

Visual ID	Multi Weight 1/05/2003	Multi Weight 1/06/2003	Multi Weight 1/07/2003	Daily Live Weight Gain (Calculated 1)
EEE	440	490	560	1.97
FFF	418	515	590	2.82

At the bottom of the window, it indicates '2 Record(s)'. A red circle is drawn around the 'Daily Live Weight Gain (Calculated 1)' column header and its corresponding data values (1.97 and 2.82).