

MAX Network Installation.

MAX can be run on a Peer to Peer Network or a Local Area Network.

Installation is different for Peer to Peer and LAN networks where the server is being used as a workstation.

To complete installation you should have A MAX CD or MAX32N Setup file.

Please contact support@fairport.com.au if you require any further assistance.

LAN Installation from a Workstation

YOU WILL NEED TO INSTALL MAX FROM ALL WORKSTATIONS

If your Server is not shown on your workstation as a "Mapped Drive" then you must do this first.

Using Windows Explorer, open Network Neighborhood, then open the Server...

You should see the servers C drive listed (and any other drive that has been set up as a Shared Drive).

Right click on the Server Drive (or Folder) you are to install MAX onto and choose "Map Network Drive"... Select a Drive Letter from the list.

It is a good idea to have a MAX32 folder on the server drive as a shared folder.

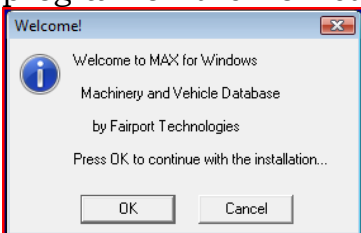
We are using P: in the example.

Server C Drive has a MAX32 folder (C:\MAX32)

If this folder is Shared and Mapped on each Workstation as M:

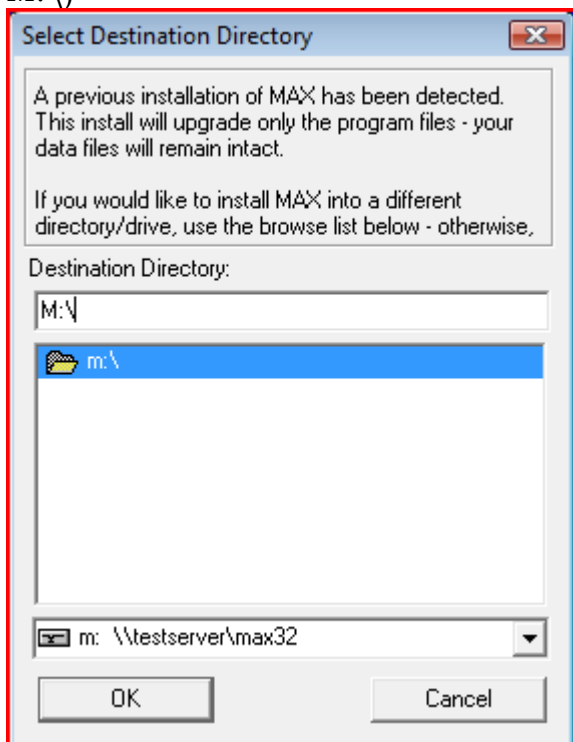
When the workstation chooses M:\ to install to, it will install to the following on the servers disk C:\MAX32

Using the MAX CD or MAX32n.exe Setup file, commence installing the appropriate program on the workstation...



Enter Password if required

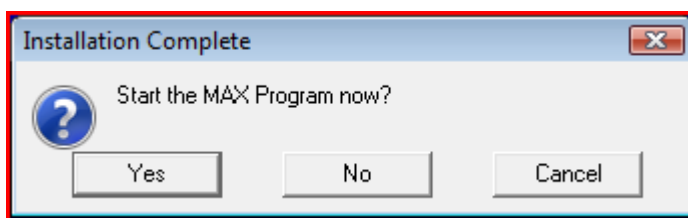
And choose the Drive Letter on the Server as your Destination Drive and point to the Folder that you have already created during the Server Installation Process.
eg. M:\ (this will install to the Servers C:\MAX32 folder that has been mapped as M:\)



Please Note: If you have already installed the program on the server (if the server is a workstation too), ensure your destination directory is the same one you chose when you did the server installation. Take care not to create more than one installation of MAX on your server's Hard Disk.

Server C Drive has a MAX32 folder (C:\MAX32)
If this folder is Shared and mapped on each Workstation as M:

If the workstation chooses M:\MAX32 to install to it will create the following on the servers disk C:\MAX32\MAX32 and you will end up with two copies of the software and data.



IMPORTANT:

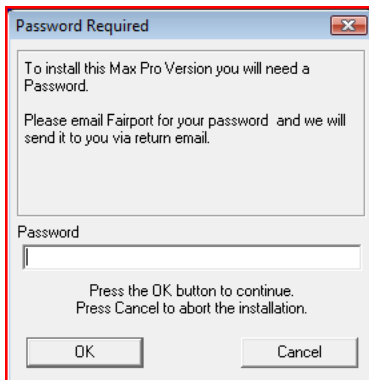
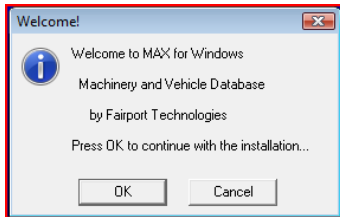
All users need to be either Administrators or have Read/Write permission to the Installation Folder & the Windows registry keys -
HKEY_LOCAL_MACHINE\SOFTWARE\Fairport
HKEY_LOCAL_MACHINE\SOFTWARE\Opus

How to install networked Max on a Peer to Peer Network or on a Server that is being used as a Workstation

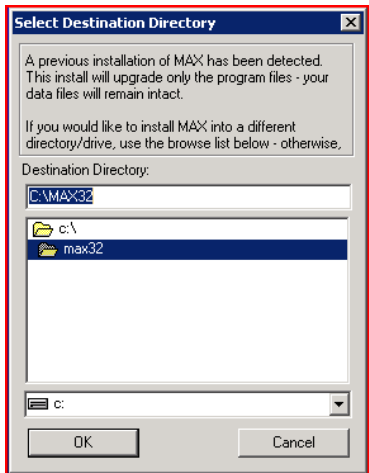
This only applies to installations where MAX will be used on the same machine as where the data is stored. If the data is stored on a network server, but MAX is not actually used at the Server, you only need the normal Network MAX installation (See LAN Installation from a Workstation above).

First download both Standalone (MAX32.exe) & Network (MAX32n.exe) installation setup files of MAX.

1. Install Standalone MAX on the main PC, where the data will be stored



Enter Password if required



Select c:\Max32 as the Destination Folder

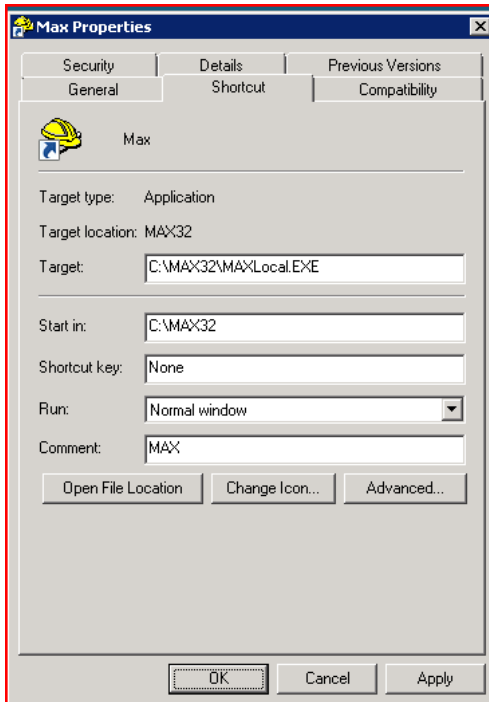
2. Rename Max32.exe to MaxLocal.exe, and update any shortcuts so that you run MaxLocal on this PC/Server. You will need to modify the shortcut in the Startup menu to point to MaxLocal.exe now, not Max32.exe. You will also need to update

the desktop icon.

Name	Date modified	Type	Size	Tags
INSTALL.LOG	24/09/2009 12:0...	Text Document	8 KB	
MAX.EXE	22/01/2008 11:1...	Application	856 KB	
MAX.HLP	13/01/1997 1:00...	Help File	420 KB	
MAX.MDB	22/01/2008 11:0...	MDB File	260 KB	

to

INSTALL.LOG	24/09/2009 12:0...	Text Document	8 KB
MAX.HLP	13/01/1997 1:00...	Help File	420 KB
MAX.MDB	22/01/2008 11:0...	MDB File	260 KB
MAXLocal.EXE	22/01/2008 11:1...	Application	856 KB



Right Click on MAX Shortcut or Menu Item, select Properties and change the Target to "C:\MAX32\MAXLocal.EXE"

3. You now need to Share the c:\MAX32 folder for the other PC's/Workstations to be able to see it.

4. On the other PC's/Workstations that you want to Install MAX, ensure that you have a drive letter mapped to the main PC with the data.

4. Now you can run the installation from the other PC's /Workstations (see Start of Document)