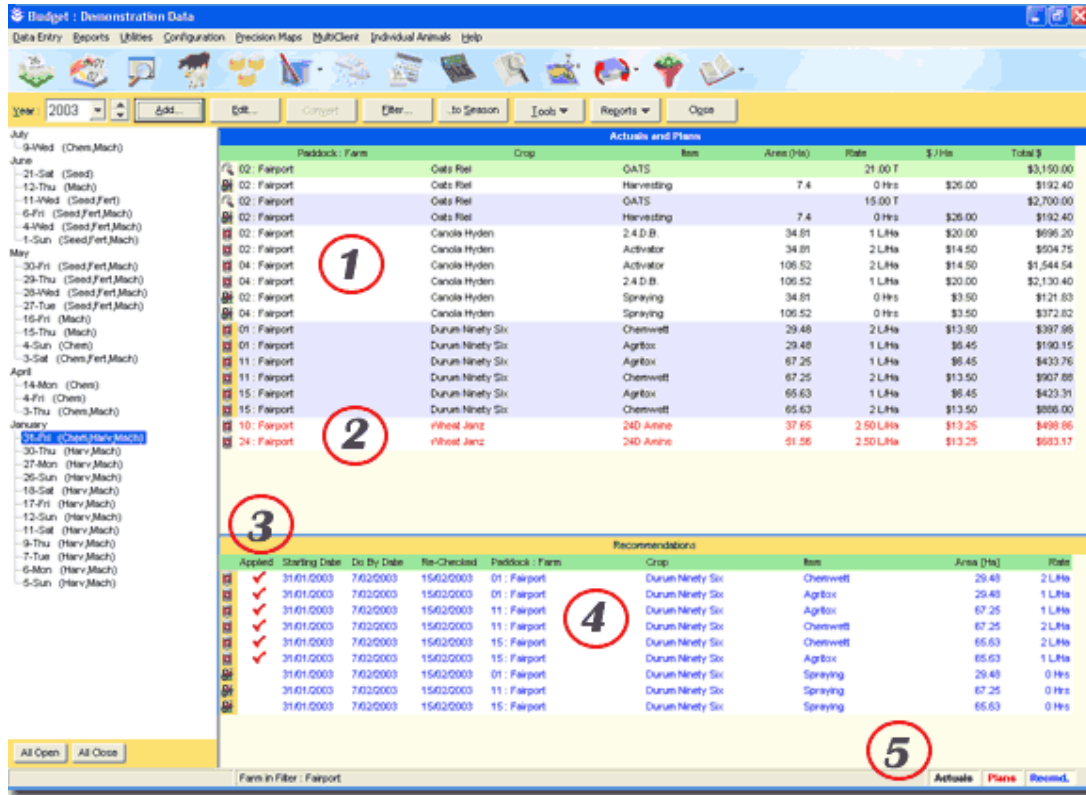


Plans and Recommendations

New in PAM QA Plus version 4.0 !

The Paddock Diary now has some new sections, features and buttons. Let us first run through these new parts:

Image: PAM 4.0 Paddock Diary Screen




- 1 The Paddock Diary Summary Screen
- 2 The new Plan records (shown as red text)
- 3 The Recommendations records separator bar
- 4 The Recommendation activities (shown as blue text)
- 5 The Paddock Diary Summary Screen control buttons

Adding Plans and Recommendations:

On the first screen of the Add Activity wizard you will find a couple of new options, you are now able to select from the type of activity that you are entering into PAM... the first of these is the :

The screenshot shows the 'Operation Selection' dialog box. The 'Operation' dropdown is set to 'Chemical Application'. The 'Record Type' section has three radio buttons: 'Actual', 'Planned', and 'Recommendation', with 'Recommendation' selected. To the right of the radio buttons is a text field containing '00002 - 00014'. Below this, the 'Date' is set to '31/01/2003' with a 'Today' button and a field for 'or within 0 days'. The 'Season' is set to '2003' and the 'Re-Checked Date' is '7/02/2003'. The 'Associated Activities' list has three items checked: 'Chemical Application', 'Machinery Operation', and 'Sundries Consumed'. There are 'Config...' buttons next to the 'Operation' and 'Associated Activities' sections.

Actuals: Select “Actual” to record historical data ... that is, for activities once they have been completed, both Plans and recommendations can be converted to Actuals at any time.

Plans: Before you set out for the week’s or day’s work, you can set up the jobs in advance with the plans option in the PAM Add Activity Wizard. The data entry steps are the same as for entering an actual record apart from selecting the plan option on the first screen of the Add Activity Wizard. The plans are displayed in the Paddock Diary in Red text (Image: Paddock Diary #2) for easy identification. At any stage you may convert the plans to actuals by highlighting (clicking) the plan record in the paddock diary and clicking the button,  this will open the edit

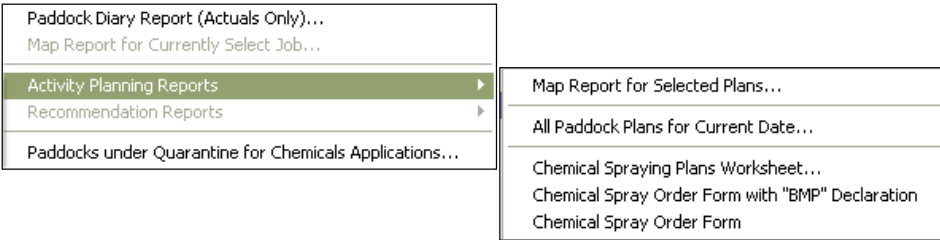
record screen where you can ‘fine tune’ the details of the records before committing it to an Actual record.

Recommendations (MultiClient Only): These records occupy a separate part of the Paddock Diary screen for easy identification, these records can be entered directly into your copy of PAM QA Plus MultiClient (in the case of a MultiClient user) or they can be imported within a backup file from an export from a consultant’s MultiClient version of PAM. After a record has been added as a recommendation, it can be converted to an Actual or a Plan using the “Convert” button that can be found in the top set of buttons on the Paddock Diary Screen.

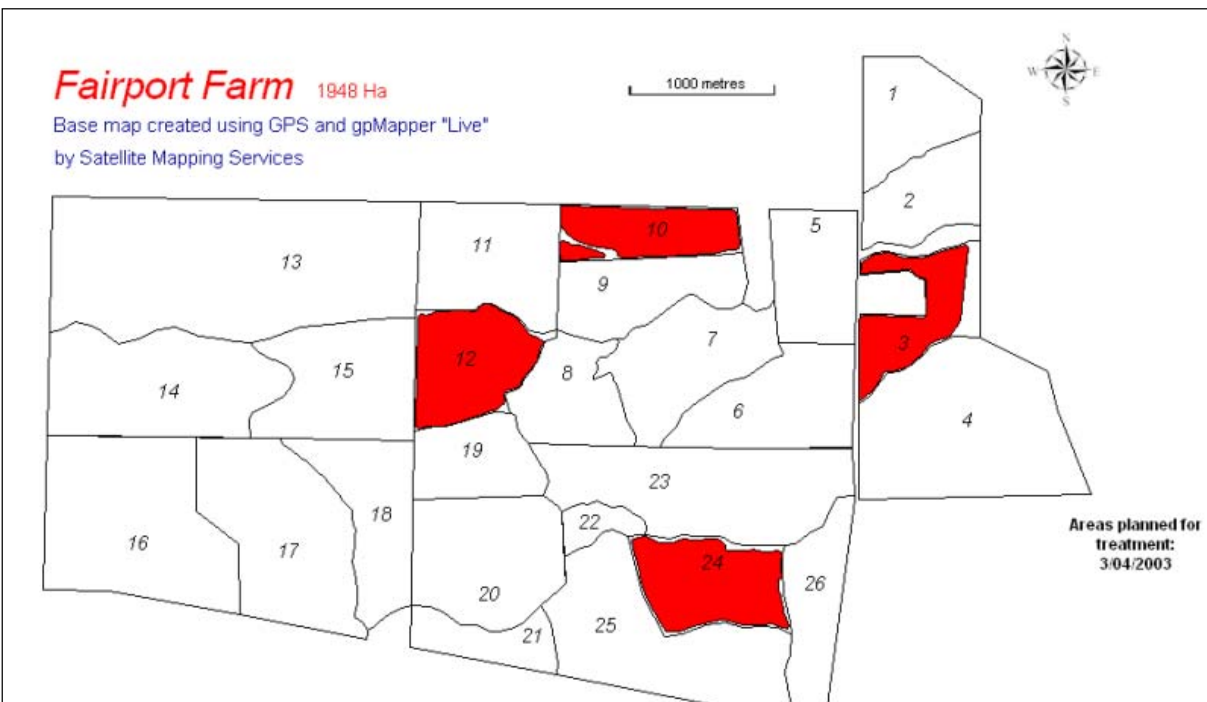


Once the recommendation record has been converted to either a Plan or an Actual, the record will appear in the Paddock Diary Summary Screen as an **1** Actual or a **2** Plan. The record will also remain in the Recommendation partition, but it will have a ✓ in the “Applied” column indicating that the recommendation has been converted to either a Plan or an Actual.

Special Reports for Planned Activities



Planned Activities reports include a special **Map Report of the Selected Plans...** For example:



The areas that are involved in the activity that was selected on the main Paddock Activities Diary screen are printed on your farm map.

All Paddock Plans for the Current Date

A report which lists all planned tasks in a paddock by paddock listing. The report form has space on it to allow for notes.

The **Chemical Spraying Worksheet** and **Chemical Spray Order Forms** are similar in data content but differ in layout to suit different purposes.

The **Chemical Spray Order Form with "BMP" Declaration** is designed to suit the needs of cotton growers who are complying with the Best Management Practice guidelines.

Special Reports for Recommendations


| | |
|---|---|
| Paddock Diary Report (Actuals Only)... | |
| Map Report for Currently Select Job... | |
| Activity Planning Reports | ▶ |
| Recommendation Reports | ▶ |
| Paddocks under Quarantine for Chemicals Applications... | |

| |
|--|
| Map Report for Current Recommendation... |
| Paddock Recommendation Report |

Recommendation reports include a professionally laid out **Paddock Recommendation Report** form like this ...

Page 1

Client : Fairport Technologies - Roger Wiese



The Farm Consultancy
 "Upside Downs"
 Wondering Away
 New South Wales 2987
 02 6789 1011

Paddock Recommendations - Season: 2003 **Recommendation #: 00016 - 00002**

Client : Fairport Technologies - Roger Wiese

Contact: Roger Wiese
Address: PO Box 123
 Moora WA 6520

Telephone: 08 96514 1244 **Facsimile: 08 96514 1244**
Mobile: 0412345678 **Email: roger@fairport.com.au**

| | | |
|---------------|------------------------|----------------|
| Areas: | Farm / Paddock: | Crop: |
| | Fairport / 02 | Canola / Hyden |
| | Fairport / 04 | Canola / Hyden |

Timing: **3/04/2003** - to - **10/04/2003** Re-Check Date: **16/04/2003** Growth Stage:

RECOMMENDATIONS

| Advise d Actions | Rate Information | Conc. Factor |
|------------------------------------|------------------|--------------|
| Chemical Application Agritox | 1 L (2/100L) | 1 |
| Chemical Application Chemwett | 2 L (4/100L) | 1 |

and the **Map Report for Current Recommendation** which shows a map of the areas involved in the recommendation (see the Map Report for the Planned Activities above).