



IAR – Daily Live Weight Gain Reports - Help Note

Contents:

How to set up Weight Traits in PAM IAR.....	2
How to enter weights in PAM IAR	3
METHOD 1	3
METHOD 2	3
METHOD 3	4
METHOD 4	5
Generating the Live weight Gain Reports	6

How to set up Weight Traits in PAM IAR

Firstly, you will need to set up at least one Weight Trait so you can record weights in the IAR system. To set up weight traits follow these steps:

1. Go to *Configuration / Individual Animal Traits, Tasks and Weights*
2. Add the weight traits that you will require on the "Weight Items" tab. If in doubt, only enter one weight trait... call it "Weight" Or "Body Weight" or "Live Weight" ... and make sure you set the trait as a "multiple" type trait.

The screenshot shows the 'Add Weight Item' dialog box. The 'Long Name' is 'Body Weight', 'Short Name' is 'BW', and 'Decimal Places' is '1'. The 'Each animal can have' dropdown is set to 'multiple', and the text 'record(s) of this trait.' is visible. A red circle highlights the 'multiple' dropdown and the text 'record(s) of this trait.'.

Please Note: You may want to (or need to) set up weight traits like; Birth Weight, 100 day weight, 200 day weight, 400 day weight etc. In these cases, ensure that you set them up as "single" type traits ... as each animal can only have one Birth Weight or one 100 day weight.

For the average daily live weight gain reports, PAM will use any of the weight traits that you have set up. So, if you want to get the average daily weight gain of an animal from birth through to its 400 day weight, PAM will use whichever weight records it can to do the calculation.

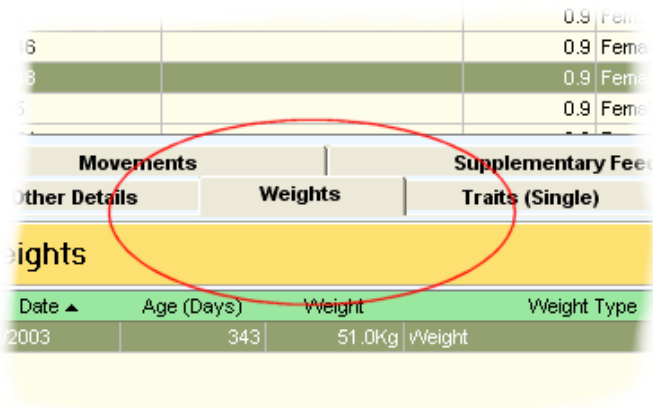
The screenshot shows the 'Individual Animal Traits, Tasks and Weights' dialog box. The 'Weight Items' tab is active, and the 'Birth Weight' trait is selected. The 'Name for Export File' field is highlighted with a red circle. A callout box points to this field with the text: "In the IAR Trait Browser screen you can export data. This is your default name for the export file for this trait."

How to enter weights in PAM IAR

Method 1

On the IAR Main Screen, having selected your list of animals,

1. click on the Weights tab...



2. ...now select the animal on the list,
3. click on the "Add" button,
4. select the appropriate weight trait item form the pick list and enter the weight.
5. Click "OK" ... then
6. repeat the steps for each animal.

Method 2

1. Set up a "Task" in the *Configuration / Individual Animal Traits, Tasks and Weights* screen (which you can also assess via the "Tools" button at the top the IAR main screen, or the "Tools" button on the Weights tab) ... The task you set up can be called Weighing ... and add to the task list the weight trait you are wanting to use to record the weights. Then ...
2. Under "Tools" at the top of the IAR Main Screen, choose *Group Add Trait(s)*...
3. Select your "Weighing" Task from the Tasks pick list.
4. Select the appropriate date for the weight records.

Group Add Trait(s) Close

Hint :
You can enter the same values for more than one animal at a time by first [selecting multiple animals](#).

To [select multiple animals](#), first **press** and **hold** the **[Ctrl]** key, then select the animals you want. Finally, **release** the **[Ctrl]** key.

Select Task:
Task: Weighing Traits & Tasks List...

Default Date for Traits: 7/11/2003 Today Apply to All Trait(s)
(Date is only applicable to Traits with multiple instance)

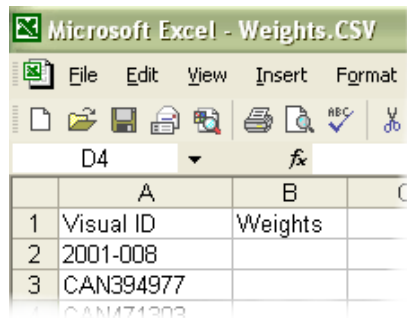
Trait	Date	Value	Comment
Body Weight	7/11/2003	499	

5. Select each animal and...
6. enter the weight ... then...
7. Click the Apply Value(s) to Selected Animal(s) button to record the weight.

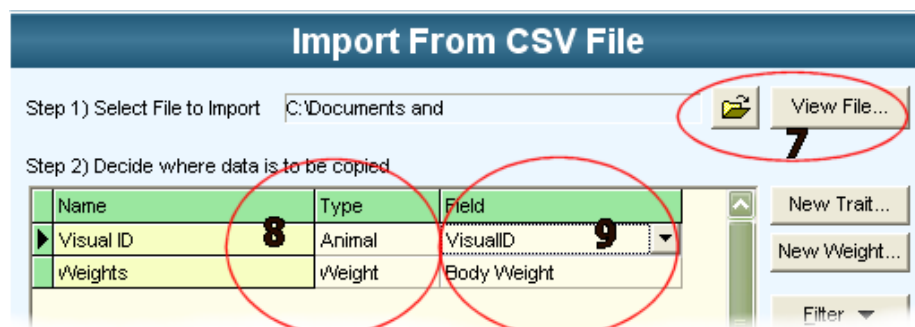
The weights will be recorded against the animal behind the scenes ... If you re-select the animal in this screen, PAM will assume you need to overwrite the original entry for the weight on that chosen date.

Method 3

1. Export a selected list of animals from the Trait Browser to a comma delimited file. (See the Trait Browser information notes for the steps).
2. Import the file into a spreadsheet program.
3. Create a column heading called "Weights" in column B



4. Enter the weights into column B of the spreadsheet alongside each animal... then when done,
5. Save the file as a "CSV" text file ... then,
6. Import the saved file into PAM's IAR system via the menu options ... *Individual Animals / Import / CSV File...*



7. (Step 1 on the dialog) Select the file you saved in the spreadsheet program.

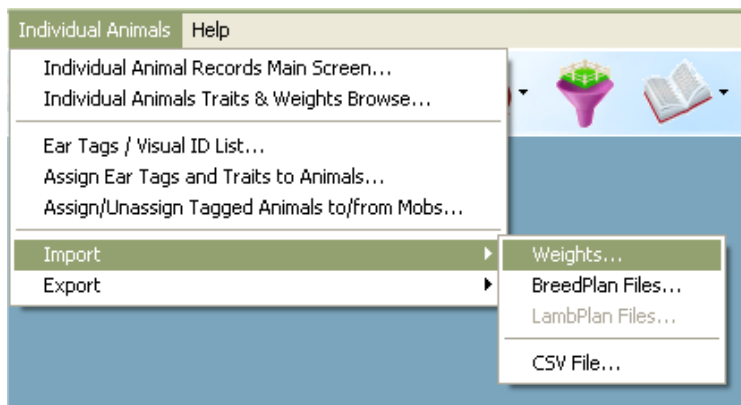
8. (Step 2 on the dialog) Select the data type that is being imported in each of the columns in the text file.
9. Select the traits that “line up” with each data column in the in-coming test file. This is called “mapping” the data.
10. Now enter the date that goes with the weights entered in the spreadsheet.

Method 4

Import the weights from a file generated by a set of electronic scales.

Steps:

1.



2. Follow the steps (1 to 5) on the “Import Weights” dialog shown here ...

Import Weights

Step 1) Select Data to Import ▼

Step 2) Import Data from File... 📁

Step 3) Destination Weight ▼ New...

Step 4) Weighing Date ▼

Step 5) Click on Continue button...

IMPORTANT:

We strongly recommend that you **backup your data** before proceeding with this import.

- Follow the steps on this dialog. Here animal IDs in the importing file are matched to existing animals in your list.

Importing RuddWeigh from File

Select and drag items from your Imported Data List and drop them onto a Master List equivalent.

Unmatched Animal IDs	Existing Animal IDs	
AXC-123	Existing	Matched To
XCV-321	2001-001	2001-001
XSW-433	2001-004	
	2001-008	2001-008
	CAN30K	CAN30K
	CAN394977	CAN394977
	CAN42H	CAN42H
	CAN471303	CAN471303
	CAN47M	CAN47M
	COHQ18	COHQ18
	CSW1000	CSW1000

Import Options: Only import data for matched animals

Existing Data Options: Update existing VIDs with imported VIDs

View Event Log after Import

Notes:

- Drag an item, Space bar or Double Click an item to move items between Lists.
- Shift Up and Down keys or Drag an item to change the position within the Master list.
- Exact matches are created automatically and cannot be changed or removed.

- Finally click on "Import" to bring the new weight data into PAM.

Generating the Live weight Gain Reports

The Live weight Gain reports can be accessed via

- ✓ *Individual Animals / Individual Animals Main Screen / Reports / Individual Animals Daily Live weight Gain Report... or...*
- ✓ *Reports / Individual Animals Daily Live weight Gain Report...*

A report selection dialog will be shown...

By choosing appropriate options on this dialog, a myriad of different report types can be generated.

Step 1: Select the preferred report style:

Step 1 : Select the Daily Liveweight Gain Report Type

Days to reach a target Weight Report
Days to reach a target Weight Report
Weights achieved at a target Date Report
Calculated Daily Liveweight Gain per Animal Report

Step 2:

If you chose "Days to reach a target weight", you will need to specify that weight.

If you chose "Weights achieved at a target date", you will need to specify a target date.

Step 3:

Select the animals to be included in your report.

Step 4:

Follow the instruction on the screen...

If you choose not to calculate a daily live weight gain value for the animals, you will have to enter a default gain value. This default value should also be used to cater for any animals which do not have enough data to enable PAM to automatically calculate a daily live weight gain.

Step 4 : Select Daily Liveweight Gain calculation Options

Calculate a Daily Liveweight Gain value for each Animal?

Use all Weight records in calculation?

Use Weight records within a Date Range?

Starting On : 1/01/2003 Ending On : 6/11/2003

Use only the last two Weight records for each animal in calculation?

Please note : If no Daily Liveweight Gain value can be calculated for any animal, then the Default Daily Liveweight Gain value specified below will be used.

Default Daily Liveweight Gain value for each Animal : 0.00 Kg

Step 5: Select an appropriate sorting option.

Step 6: Generate the report.